

DRAFT – For Discussion Purposes



# 2016 Reliability Needs Assessment



**New York Independent System Operator**

**DRAFT 09/20/16 REPORT**  
*(as modified at the September 19, 2016 OC)*  
**For September 28, 2016 MC**

**Caution and Disclaimer**

The contents of these materials are for information purposes and are provided “as is” without representation or warranty of any kind, including without limitation, accuracy, completeness or fitness for any particular purposes. The New York Independent System Operator assumes no responsibility to the reader or any other party for the consequences of any errors or omissions. The NYISO may revise these materials at any time in its sole discretion without notice to the reader.

## Table of Contents

---

<b>Executive Summary .....</b>	<b>i</b>
<b>1. Introduction .....</b>	<b>1</b>
<b>2. Overview of RPP Changes .....</b>	<b>3</b>
<b>3. Summary of Prior CRPs .....</b>	<b>6</b>
<b>4. RNA Base Case Assumptions, Drivers, and Methodology.....</b>	<b>7</b>
4.1. Annual Energy and Summer Peak Demand Forecasts.....	8
4.2. Forecast of Special Case Resources .....	15
4.3. Capacity Resource Additions and Removals.....	15
4.4. Local Transmission Plans .....	19
4.5. Bulk Transmission Projects.....	19
4.6. Base Case Peak Load and Resource Ratios .....	20
4.7. Methodology for the Determination of Needs .....	22
<b>5. Reliability Needs Assessment .....</b>	<b>26</b>
5.1. Overview .....	26
5.2. Reliability Needs for Base Case .....	26
5.2.1. Transmission Security Assessment.....	26
5.2.2. Short Circuit Assessment.....	33
5.2.3. System Stability Assessment.....	34
5.2.4. Transmission and Resource Adequacy Assessment .....	34
<b>6. Scenarios.....</b>	<b>42</b>
6.1. Introduction .....	42
6.2. Resource Adequacy Scenarios LOLE Results .....	42
6.2.1. High Load (Econometric) Forecast .....	42
6.2.2. Zonal Capacity at Risk .....	43
6.2.3. Indian Point Energy Center Plant Retirement.....	45
6.2.4. No Coal .....	45
6.2.5. No Nuclear .....	45
6.2.6. Continued Forward Sales to External Control Areas .....	46
6.3. Transmission Security Scenario Results .....	46
6.3.1. 90/10 Load Forecast .....	46
6.3.2. Western New York Public Policy Transmission Need .....	48
<b>7. Impacts of Environmental Regulations.....</b>	<b>50</b>
7.1. Regulations Reviewed for Impacts on NYCA Generators .....	50
7.1.1. Mercury and Air Toxics Standards (MATS) .....	51
7.1.2. Cross-State Air Pollution Rule (CSAPR).....	52
7.1.3. Regional Greenhouse Gas Initiative (RGGI) .....	52
7.1.4. Clean Power Plan .....	53
7.1.5. RICE: NSPS and NESHAP.....	54
7.1.6. Proposed NYSDEC Part 222 DG Rule .....	54
7.1.7. NYC Residual Oil Elimination .....	55
7.1.8. Best Technology Available (BTA) .....	55
7.2. Summary of Environmental Regulation Impacts.....	57

<b>8. Fuel Adequacy</b> .....	<b>58</b>
8.1. Gas Infrastructure Adequacy Assessment .....	58
8.2. Loss of gas Supply Assessment.....	58
8.3. Summary of Other Ongoing NYISO efforts.....	59
<b>9. Historic Congestion (new section)</b> .....	<b>61</b>
<b>10. Observations and Recommendations</b> .....	<b>62</b>
<b>Appendices</b> .....	<b>65</b>

**Table of Tables**

---

<b>Table E-1:</b> 2016 RNA Load and Capacity Comparison with the 2014 RNA and 2014 CRP (MW) ....ii	
<b>Table E-2:</b> 2016 RNA Transmission Security Reliability Needs .....ii	
<b>Table 3-1:</b> Current Status of Tracked Market-Based Solutions & TOs’ Plans ..... 6	
<b>Table 4-1:</b> 2016 RNA Econometric, Baseline, and Baseline with SPV Forecasts Added Back In .. 10	
<b>Table 4-2:</b> Comparison of 2014 RNA & 2016 Baseline Forecasts ..... 11	
<b>Table 4-3:</b> Forecast of Solar PV BTM Reductions in Coincident Summer Peak Demand (MW)... 14	
<b>Table 4-4:</b> Generation Additions Included in the 2016 RNA Base Case ..... 16	
<b>Table 4-5:</b> 2016 RNA Generation Deactivations ..... 17	
<b>Table 4-6:</b> Additional Proposed Generation Projects from the Gold Book 2016 ..... 18	
<b>Table 4-7:</b> Additional Proposed Transmission Projects from the Gold Book 2016 ..... 19	
<b>Table 4-8:</b> NYCA Peak Load and Resource Ratios 2017 through 2026 ..... 21	
<b>Table 4-9:</b> Load/Resources Comparison of Year 2021 (MW) ..... 22	
<b>Table 5-1:</b> 2016 RNA Preliminary Transmission Security Thermal Violations ..... 32	
<b>Table 5-2:</b> 2016 RNA Remaining Transmission Security Thermal Violations ..... 32	
<b>Table 5-3:</b> 2016 RNA Transmission Security Reliability Need Year ..... 33	
<b>Table 5-4:</b> Minimum Compensatory MW Additions for Transmission Security Violations..... 33	
<b>Table 5-5:</b> Transmission System Thermal Emergency Transfer Limits ..... 35	
<b>Table 5-6:</b> Transmission System Voltage Emergency Transfer Limits ..... 35	
<b>Table 5-7:</b> Transmission System Base Case Emergency Transfer Limits ..... 35	
<b>Table 5-8:</b> NYCA Resource Adequacy Measure (in LOLE) ..... 41	
<b>Table 6-1:</b> High Load vs Baseline Summer Peak Forecast ..... 43	
<b>Table 6-2:</b> 2016 RNA Zonal Capacity at Risk LOLE ..... 44	
<b>Table 6-3:</b> 2016 RNA Resource Adequacy Scenarios NYCA LOLE Results..... 46	
<b>Table 6-4:</b> 90/10 Peak Load Forecast NYCA versus Baseline Forecast (MW) ..... 46	
<b>Table 6-5:</b> 2016 RNA 90/10 Transmission Security Thermal Violations ..... 47	
<b>Table 6-6:</b> 2016 RNA Transmission Security Thermal Violations for Western Public Policy ..... 49	
<b>Table 7-1:</b> NYSDEC BTA Determinations (as of July 2016)..... 56	
<b>Table 7-2:</b> Impact of New Environmental Regulations..... 57	
<b>Table 8-1:</b> Loss of Gas Supply Winter Peak Load and Capacity Minus Gas Units..... 59	

**Table of Figures**

---

**Figure E-1:** Areas of the Transmission Security Related Reliability Needs.....iii

**Figure 2-1:** NYISO Reliability Planning Process (RPP) ..... 5

**Figure 4-1:** 2016 Econometric, Baseline and Baseline with SPV Energy Forecasts ..... 12

**Figure 4-2:** Econometric, Baseline and Baseline with SPV Summer Peak Demand Forecast..... 12

**Figure 4-3:** 2016 Energy Efficiency & Behind-the-Meter Solar PV – Annual Energy ..... 13

**Figure 4-4:** 2016 Energy Efficiency & Behind-the-Meter Solar PV – Summer Peak ..... 13

**Figure 5-1:** Approximate Areas of Transmission Security Needs ..... 27

**Figure 5-2:** 2016 RNA Topology Year 1 (2017)..... 38

**Figure 5-3:** 2016 RNA Topology Year 2 to 10 (2018-2026) ..... 39

**Figure 5-4:** 2016 RNA Topology Zones G to J, Year 1 to 10 (2017 to 2026) ..... 40

## Executive Summary

This 2016 Reliability Needs Assessment (RNA) assesses both the transmission and resource adequacy and the transmission security of the New York Control Area (NYCA) bulk power transmission system from year 2017 through 2026, the “Study Period” of this RNA.

This 2016 Reliability Needs Assessment finds two transmission security related Reliability Needs in portions of the Bulk Power Transmission Facilities (BPTF) beginning in 2017:

- the New York State Electric & Gas Corp. (NYSEG) Oakdale 345/115 kV transformer, and
- the Long Island Lighting Company d/b/a Long Island Power Authority (LIPA) East Garden City to Valley Stream 138 kV line.

This 2016 Reliability Needs Assessment finds that the resource adequacy criterion is met throughout the Study Period.

The Reliability Needs Assessment is the first step of the NYISO Reliability Planning Process. As a product of this step, the NYISO documents the Reliability Needs in the Reliability Needs Assessment report, which ultimately is presented to the NYISO Board of Directors for approval.

Following NYISO Board approval, the NYISO initiates the next step, which starts by requesting Local Transmission Owner Plans (LTPs) updates. As part of this step, the NYISO will consider updates to Local Transmission Owner Plans and, if necessary, solicit market-based solutions, regulated backstop solutions, and alternative regulated solutions to the identified Reliability Needs. The NYISO then proceeds to assess the viability and sufficiency of each of the possible solutions, leading to the development of the Comprehensive Reliability Plan (CRP).

The Comprehensive Reliability Plan provides documentation of the solutions determined to be viable and sufficient to meet the identified Reliability Needs and, if appropriate, ranks any regulated transmission solutions submitted for the Board to consider for selection of the more efficient or cost effective transmission project. If built, the selected transmission project would be eligible for cost allocation and recovery under the NYISO’s tariff.

### Summary of Transmission and Resource Adequacy Results

From the transmission and resource adequacy perspective, the New York Control Area is within the Loss of Load Expectation (LOLE) criterion (1 day in 10 years, or 0.1 events per year) throughout the ten-year Study Period. This is mainly attributable to the decrease in the summer peak baseline load forecast of approximately 2,300 MW in 2021 as compared with the

2014 Reliability Needs Assessment. When recent and planned capacity deactivations were included in the calculation, the net statewide surplus increased by approximately 3,000 MW as compared with the 2014 Reliability Needs Assessment and about 975 MW as compared with the 2014 Comprehensive Reliability Plan (see **Table E-1**).

**Table E-1: 2016 RNA Load and Capacity Comparison with the 2014 RNA and 2014 CRP (MW)**

2016 RNA vs. 2014 RNA				2016 RNA vs. 2014 CRP			
Year 2021	2016 RNA	2014 RNA	Delta 2016RNA - 2014RNA	Year 2021	2016 RNA	2014 CRP	Delta 2016RNA - 2014CRP
Baseline Load	33,555	35,890	-2,335	Baseline Load	33,555	35,765	-2,210
SCR	1,248	1,189	59	SCR	1,248	1,189	59
Total Capacity without SCRs	39,899	39,322	577	Total Capacity without SCRs	39,899	41,193	-1,294
Net Change in Capacity less Load			2,971	Net Change in Capacity less Load			975

### Summary of Transmission Security Results

The 2016 Reliability Needs Assessment has identified two transmission security related Reliability Needs in portions of the Bulk Power Transmission Facilities. Specifically, **Table E-2** and **Figure E-1** show that the identified transmission security issues occur in Long Island and Western New York beginning in 2017.

**Table E-2: 2016 RNA Transmission Security Reliability Needs**

Zone	Owner	Monitored Element	Year of Need
C	NYSEG	Oakdale 345/115 2TR	2017
K	LIPA	East Garden City-Valley Stream (#262) 138	2017

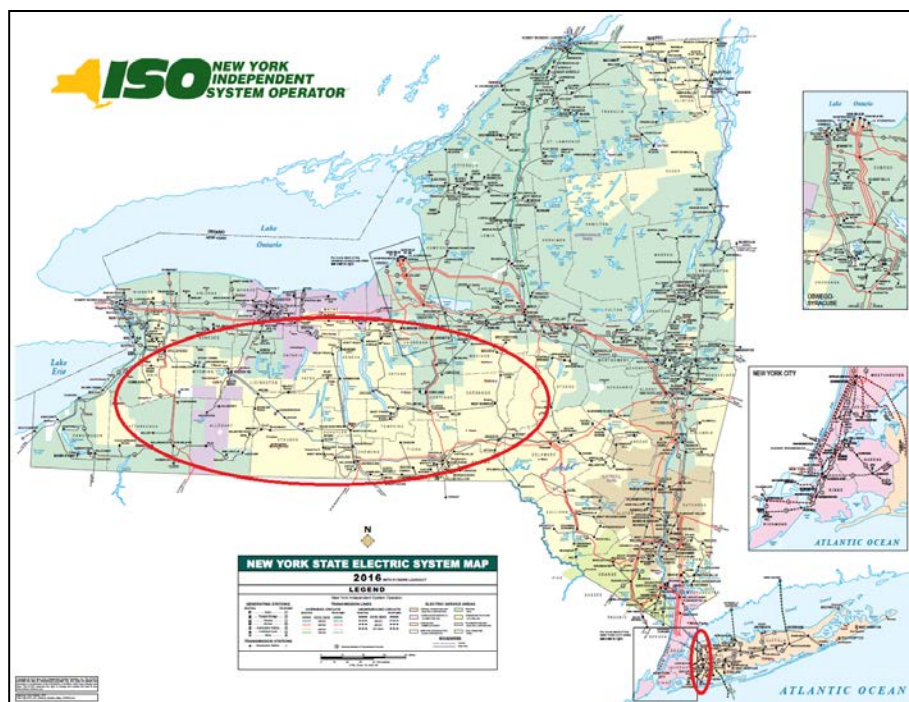
In Long Island, the East Garden City to Valley Stream 138 kV line could not be secured within applicable thermal ratings when another 138 kV line is out-of-service (also known as an “N-1-1” condition). The power flow on this facility is driven by the combination of LIPA load in western Long Island and the scheduled 300 MW wheel between ConEdison and LIPA. This overload has now been identified as a result of no longer reducing the wheel following an outage, for which ConEdison’s contractual portion of Y50 is assumed to be delivered to ConEdison, thus reducing the portion of western Long Island load that is capable of being served through the overloaded facility from generating sources in eastern Long Island.

The Oakdale 345/115 kV transformer also could not be secured within applicable thermal ratings under certain transmission line outage conditions. This overload was noted in



the 2014 Reliability Needs Assessment as well. At that time, NYSEG provided an update to their Local Transmission Owner Plans that included a third Oakdale transformer and reconfiguration of the Oakdale 345 kV substation. NYSEG’s planned in-service date was 2018, which met the inclusion rules and therefore addressed the Reliability Need identified in the 2014 Reliability Needs Assessment. However, as part of the 2016 Gold Book reporting process, NYSEG updated the in-service date to the winter of 2021, which does not meet the inclusion rules for this 2016 Reliability Needs Assessment Base Case. Without this project in the Base Case, the Oakdale transformer remains overloaded.

**Figure E-1:** Areas of the Transmission Security Related Reliability Needs



The two transmission security related Reliability Needs listed in **Table E-2** will be eligible for the NYISO to solicit solutions if those Reliability Needs remain unresolved by further updates to Local Transmission Owner Plans. Following such a solicitation by the NYISO, developers may submit market-based solutions and alternative regulated solutions for evaluation as part of the 2016 Comprehensive Reliability Plan.

As a backstop to market-based solutions, the NYISO employs a process to define responsibility should the market fail to provide an adequate solution to an identified Reliability Need. The Responsible Transmission Owners for the identified Reliability Needs, NYSEG and LIPA, will be tasked to develop detailed regulated backstop solutions for evaluation in the 2016 Comprehensive Reliability Plan.

Given the limited time between the identification of the transmission security related Reliability Needs in this Reliability Needs Assessment report and their occurrence in 2017, the use of demand response and operating procedures, including load shedding under emergency conditions, may be necessary to maintain reliability during peak load periods until permanent solutions can be put in place. Accordingly, the Responsible Transmission Owners will present at the Electric System Planning Working Group (ESPWG) and at the Transmission Planning Advisory Subcommittee (TPAS) any updates to their LTPs that impact the Reliability Needs identified in the 2016 Reliability Needs Assessment, including their proposed operating procedures pending completion of their permanent solutions, for review and acceptance by the NYISO and consideration for inclusion in the 2016 Comprehensive Reliability Plan.

### **Summary of Scenario Results**

In addition, the 2016 Reliability Needs Assessment provides analysis of risks to the Bulk Power Transmission Facilities under certain scenarios to assist stakeholders and developers in developing and proposing market-based and regulated reliability solutions, as well as policy makers to formulate state policy.

Scenarios are variations on the Reliability Needs Assessment Base Case to assess the impact of possible changes in key study assumptions, such as higher load forecast (i.e., not including the benefits of retail solar photovoltaic (“solar PV”, or “behind-the-meter solar PV”) and of energy efficiency programs), capacity retirements or sales (e.g., all nuclear units retire, remaining coal units deactivate, etc.), and additional transmission build-outs (e.g., transmission driven by public policy) which, if they occurred, could change the timing, location, or degree of violations of applicable Reliability Criteria on the NYCA system during the Study Period.

As demonstrated in the 2016 Reliability Needs Assessment scenarios, a higher load level or additional retirement of capacity (nuclear, etc) could cause resource adequacy Reliability Needs.

The scenarios evaluated as part of this Reliability Needs Assessment are described below, including an identification of the type of assessment performed:

- **High Load (Econometric) Forecast – Resource Adequacy**

The High Load Forecast Scenario excludes the energy efficiency program impacts and retail solar PV programs from the baseline peak forecast. This results in a 2,962 MW increase in peak load in the year 2026 as compared with the Reliability Needs Assessment Base Case forecast of the same year. Given that the peak load in the econometric forecast is higher than the Reliability Needs Assessment Base Case, the probability of exceeding the LOLE criterion increases, and violations occur as soon as 2019.

- Zonal Capacity at Risk – Resource Adequacy

The Zonal Capacity at Risk Scenario identifies a maximum level of “perfect capacity” (*i.e.*, no transmission adequacy or security assessments were performed to identify further limitations) that can be removed from a zone without causing NYCA LOLE violations.

For year 2017, removal of up to 1,500 MW in Zones A through F; 1,150 MW in Zones G through I; 950 MW in Zone J; or 750 MW in Zone K would not result in a NYCA resource adequacy violation.

- Indian Point Energy Center Plant Retirement – Resource Adequacy

This scenario simulates the retirement of the Indian Point Energy Center by removing about 2,060 MW of capacity from Zone H, and finds that significant violations of resource adequacy criteria would occur immediately in 2017.

Specifically, the NYCA LOLE would be 0.21 in 2017. Beyond 2017, the LOLE would remain above the 0.1 LOLE threshold through the Study Period. Compared with the 2014 Reliability Needs Assessment, the resulting LOLE violations are lower, but continue to substantially exceed the LOLE requirement should the Indian Point Plant retire.

- No Coal – Resource Adequacy

This scenario assesses a case in which there are no coal-fired power plants operating in New York State. It found a relatively small increase in the LOLE from 0.04 to 0.06 days per year in 2017.

- No Nuclear – Resource Adequacy

This scenario assesses the retirement of the remaining nuclear power plants in New York State (in addition to Ginna and FitzPatrick already being assumed as retired in the Reliability Needs Assessment Base Case). The resulting loss of approximately 4,000 MW would increase the LOLE from 0.04 to 0.36 days per year in 2017.

- Continued Forward Capacity Sales to External Control Areas – Resource Adequacy

This scenario finds an increase in the NYCA LOLE from 0.02 to 0.04 days per year in 2020 as a result of holding the capacity sales to New England constant from 2018 to the end of the Study Period in 2026. This assessment does not address the impacts on major transmission interface transfer capabilities caused by the capacity sales to New England.

- 90/10 Load Forecast – Transmission Security

The 90/10 forecast for the statewide coincident summer peak load is on average approximately 2,500 MW higher than the baseline summer peak 50/50 forecast used in the Reliability Needs Assessment Base Case.

The two primary regions of Reliability Needs identified in the Reliability Needs Assessment Base Case are exacerbated under 90/10 coincident peak load conditions, including the occurrence of additional facility overloads in those regions.

- Western New York Public Policy Transmission Need – Transmission Security

Given the preliminary identification of Reliability Needs in Western New York, the NYISO analyzed a scenario in which a transmission project has been completed in response to the Western New York Public Policy Transmission Need. The objective of the Western New York Public Policy Transmission Need is to relieve congestion in Western New York, including access to increased output from the Niagara hydroelectric facility and additional imports of renewable energy from Ontario.

The analysis finds that a transmission project that addresses the Western New York Public Policy Transmission Need, once in-service, would reinforce the Western New York system reliability beyond the currently assumed Local Transmission Owner Plans, and would resolve the Oakdale 345/115 kV transformer overload.

In addition to the above-referenced scenarios, the NYISO also analyzed the risks associated with the cumulative impact of environmental laws and regulations, which may affect the flexibility in plant operation and may make fossil plants energy-limited resources. The RNA discusses the environmental regulations that affect long-term power system planning and highlights the impacts of various environmental drivers on resource availability.

As part of its ongoing Reliability Planning Process, the NYISO monitors and tracks the progress of market-based projects and regulated backstop solutions, together with other resource additions and retirements, consistent with its obligation to protect confidential information under its Code of Conduct. The other tracked resources include: (i) units interconnecting to the bulk power transmission system; (ii) the development and installation of local transmission facilities; (iii) additions, mothballs or retirement of generators; (iv) the status of mothballed/retired facilities; (v) the continued implementation of New York State energy efficiency, solar PV installations, clean energy standards, and similar programs; (vi) participation in the NYISO demand response programs; and (vii) the impact of new and proposed environmental regulations on the existing generation fleet.

A number of recent developments affect the Bulk Power Transmission Facilities, including the Clean Energy Standard Order issued by New York State Public Service Commission (NYPSC) on August 1, 2016, mandating implementation of a “Large-Scale Renewable Program” and a “Clean Energy Standard,” along with establishing “Facility Costs for the R.E Ginna and Nine Mile Point Nuclear Power Plants.” The NYISO will continue to monitor these and other developments.

## 1. Introduction

This report sets forth the NYISO's 2016 Reliability Needs Assessment (RNA) and scenario findings for the Study Period (years 2017 through 2026).

The RNA is developed by the NYISO in conjunction with Market Participants and all interested parties as the first step in the Reliability Planning Process (RPP). The RNA is the foundation study used in the development of the NYISO Comprehensive Reliability Plan (CRP). The RNA is performed to evaluate electric system reliability for both resource adequacy and transmission security and adequacy over a 10-year study period. If the RNA identifies any violation of Reliability Criteria for Bulk Power Transmission Facilities (BPTF), the NYISO will report a Reliability Need quantified by an amount of compensatory megawatts (MW) that would be necessary to resolve that need. After NYISO Board approval of the RNA, the NYISO will request market-based and alternative regulated proposals from interested parties to address the identified Reliability Needs, and designate one or more Responsible Transmission Owners to develop a regulated backstop solution to address each identified Reliability Need.

The CRP provides a plan for continued reliability of the bulk power system during the study period depending on a combination of additional resources. The resources may be provided by market-based solutions developed in response to market forces and the request for solutions following the approval of this RNA. If the market does not adequately respond, reliability will be maintained by either regulated solutions being developed by the TOs, which are obligated to provide reliable service to their customers, or alternative regulated solutions being developed by others. To maintain the bulk power system's long-term reliability, these additional resources must be readily available or in development at the appropriate time to address the specific need. Just as important as the electric system plan is the process of planning itself. Electric system planning is an ongoing process of evaluating, monitoring, and updating as conditions warrant. Along with addressing reliability, the RPP is also designed to provide information that is both informative and of value to the New York wholesale electricity marketplace and federal and state policy makers.

Proposed solutions that are submitted in response to an identified Reliability Need are evaluated in the development of the CRP and must satisfy Reliability Criteria. However, the solutions submitted to the NYISO for evaluation in the CRP do not have to be in the same amounts of MW or locations as the compensatory MW reported in the RNA. There are various combinations of resources and transmission upgrades that could meet the needs identified in the RNA. The reconfiguration of transmission facilities and/or modifications to operating

protocols identified in the solution phase could result in changes and/or modifications of the needs identified in the RNA.

This report begins with the changes to the RPP that were implemented since the 2014 RNA and affect the 2016 RNA process. Next, this report summarizes the 2014 CRP findings and prior reliability plans. The report continues with a summary of the load and resource forecast for the next 10 years, the RNA Base Case assumptions and methodology, and the RNA findings for years 2017 through 2026. Detailed analyses, data and results, and the underlying modeling assumptions are contained in the appendices.

For informational purposes, this RNA report also provides the latest historical information available for the past five years of congestion via a link to the NYISO's website. The 2016 CRP will serve as the foundation for the 2017 Congestion Assessment and Resource Integration Study (CARIS), which will present more detailed evaluation of system congestion.

## 2. Overview of RPP Changes

The RPP has undergone substantive changes since the 2014 RNA. The current RPP was approved by the Federal Energy Regulatory Commission (FERC) and its requirements are contained in Attachment Y of the NYISO’s Open Access Transmission Tariff (OATT). The detailed process of the RPP is contained in the Reliability Planning Process Manual (RPP Manual).

The primary change to the RPP that affects the 2016 RNA is that the NYISO provided “preliminary RNA results” to stakeholders during the drafting of the report. The stakeholders were then able to provide substantive updates that may impact the results. The NYISO then incorporated system changes that may impact the preliminary results and that had occurred since the initial lock down date of the RNA assumptions matrix into the Base Case before finalizing the results. The NYISO considered the following updates:

- Updates to previously submitted Local Transmission Owner Plans (LTPs) or New York Power Authority (NYPA) plans that have reached a stage of development to be included and that may impact the preliminary Reliability Needs,
- Changes in Bulk Power Transmission Facilities, and
- Change in resources such as generating unit status, load forecast, or demand response that may impact the preliminary Reliability Needs.

If the NYISO determines that an update did not meet the inclusion rules and/or did not impact the preliminary Reliability Need, then the NYISO does not incorporate the change into the final RNA Base Case.

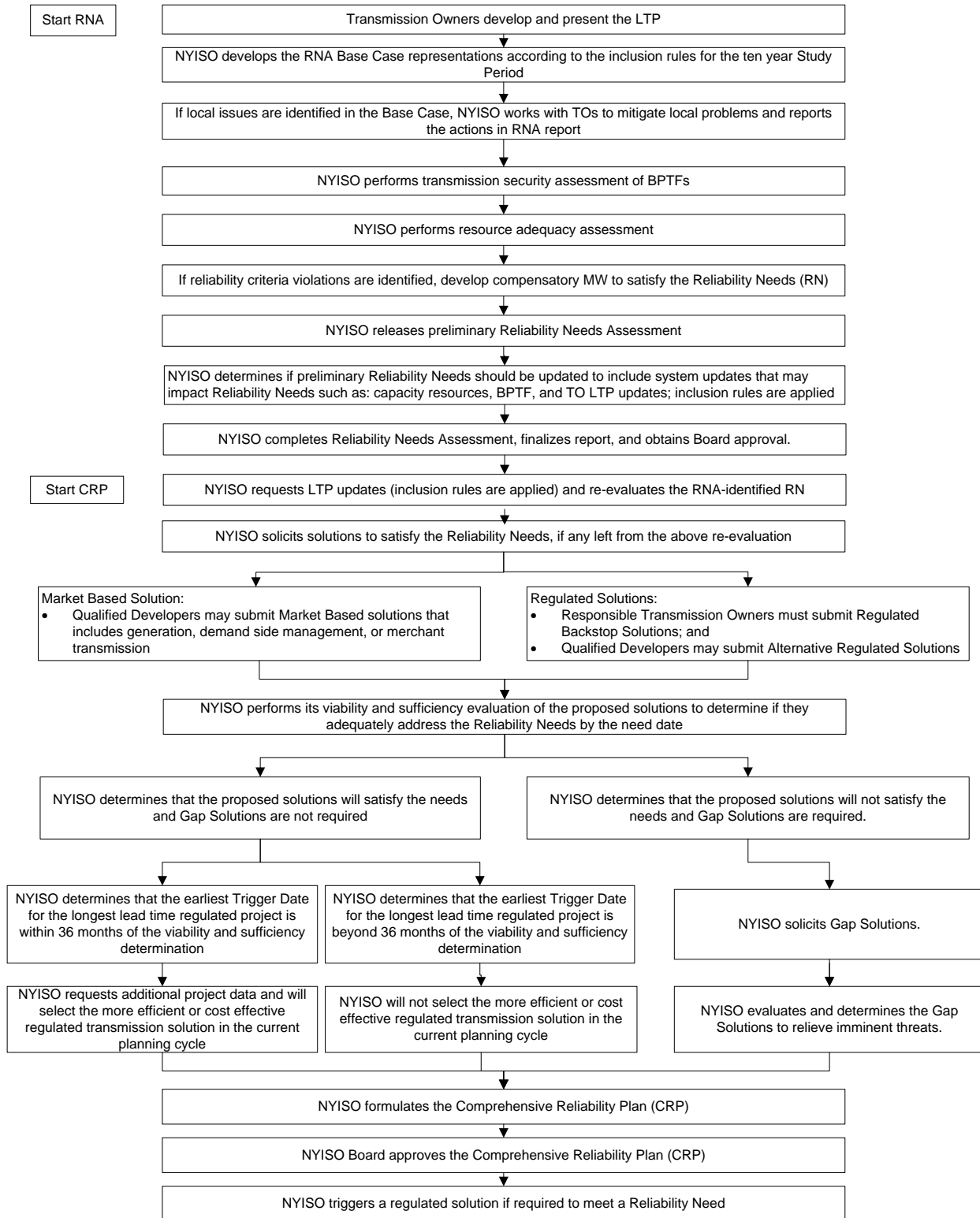
After the NYISO Board of Directors approves the RNA Report, the NYISO will request updates to the Transmission Owners’ LTPs and NYPA transmission plans before issuing a request for regulated backstop, market-based, and alternative regulated solutions to meet the Reliability Needs identified in the RNA. Prior to responding to the RNA, the Responsible Transmission Owner(s) will report at the Electric System Planning Working Group (ESPWG) and the Transmission Planning Advisory Subcommittee (TPAS) information regarding any updates in its LTPs that could affect the Reliability Needs. Also, NYPA, at the NYISO’s request, will similarly report at the ESPWG and TPAS any information about its transmission plans that could affect the Reliability Needs. The NYISO will present at the ESPWG and TPAS updates to its determination under Section 31.2.2.4.2 of Attachment Y to the OATT with respect to the Transmission Owners’ LTPs. The NYISO will then request solutions to the Reliability Needs with recognition of the updates to the Transmission Owners’ LTPs and NYPA transmission plans and their impacts on the Reliability Needs, if any. Developers should use this information in



responding to the Reliability Needs, as appropriate. Further details of the RPP, including the CRP and RNA processes, are contained in **Appendix B** of this report, and also in the RPP Manual located on the NYISO website.

An overview of the RPP, including the updated RNA process, is illustrated in **Figure 2-1** below. This figure has been updated from the one in the RPP Manual in order to reflect further clarifications.

Figure 2-1: NYISO Reliability Planning Process (RPP)



### 3. Summary of Prior CRPs

This is the eighth RNA since the NYISO’s Comprehensive System Planning Process (CSPP) was approved by FERC in December 2004. The first three RNA reports identified Reliability Needs and the first three CRPs (2005-2007) evaluated the market-based and regulated backstop solutions submitted in response to those identified needs. The 2009 RNA and the 2010 RNA indicated that the system did not exhibit any violations of applicable Reliability Criteria, hence there was no need for the NYISO to solicit solutions under the CRP process. The 2012 RNA identified Reliability Needs and the 2012 CRP evaluated market-based and regulated solutions in response to those needs.

The 2014 RNA identified both resource adequacy and transmission security related Reliability Needs, which were subsequently eliminated by the system updates received during the 2014 CRP process.

The NYISO has not previously triggered any regulated backstop solutions to meet previously identified Reliability Needs due to changes in system conditions and sufficiency of projects coming into service.

**Table 3-1** presents the market solutions and TOs’ plans that were submitted in response to previous requests for solutions.

**Table 3-1:** Current Status of Tracked Market-Based Solutions & TOs’ Plans

Queue #	Project	Submitted	Zone	Original I/S Date	Nameplate (MW)	CRIS (MW)	Summer (MW)	Proposal Type	Current Status	Included in the 2016 RNA Base Case
339	Station 255	CRP2012	B	-	N/A	N/A	N/A	TO Plan	Q4 2019-2020	Yes
-	Clay-Teall #10 115KV	CRP2012	C	2016	N/A	N/A	N/A	TO Plan	Q4 2017	Yes

#### 4. RNA Base Case Assumptions, Drivers, and Methodology

The NYISO has established procedures and a schedule for the collection and submission of data and for the preparation of the models used in the RNA. The CSPP procedures are designed to allow its planning activities to be performed in an open and transparent manner under a defined set of rules and to be aligned and coordinated with the related activities of the North American Electric Reliability Council (NERC), the Northeast Power Coordinating Council (NPCC), and the New York State Reliability Council (NYSRC). The assumptions underlying the RNA were reviewed at the TPAS and ESPWG and are shown in **Appendix D**. The Study Period analyzed in the 2016 RNA is years 2017 through 2026.

This section highlights the key assumptions and modeling data updates for the RNA. These include: (1) the load forecast model, (2) level of Special Case Resources, (3) the change in generation resource status, (4) Local Transmission Owner Plans, and (5) Bulk Transmission Projects.

Both the security and adequacy studies in the RNA Base Case use a peak demand and energy forecast originating from the baseline forecast reported in the 2016 Gold Book. The baseline forecast includes the impacts of energy efficiency programs, building codes and standards, distributed energy generation, and behind-the-meter solar PV power. The econometric forecast incorporates only the growth due to the economy and does not account for the impacts of the aforementioned programs. For the resource adequacy study, the baseline load forecast was modified by removing the retail solar PV impacts in order to model the solar PV explicitly as a generation resource to account for the intermittent nature of its availability.

The RNA Base Case was developed in accordance with NYISO procedures using projections for the installation and deactivation of generation resources and transmission facilities that were developed in conjunction with Market Participants and Transmission Owners. The changes in resources were included in the RNA Base Case using the NYISO 2016 FERC 715 filing as a starting point, adding and removing resources consistent with the base case inclusion screening process provided in the RPP Manual. Resources in the NYCA that choose to participate in markets outside of New York are modeled as equivalent contracts, whereby their capacity is removed from the NYCA for the years of the transaction and reflected in the neighboring market's control area load and capacity balance to meet their modeled LOLE target.

Representations of neighboring systems are derived from interregional coordination conducted under the NPCC, and pursuant to the Northeast ISO/RTO Planning Coordination Protocol.

#### 4.1. Annual Energy and Summer Peak Demand Forecasts

---

This section reports the baseline forecast, the econometric forecast, the behind-the-meter solar PV forecast, and the baseline forecast with projected behind-the-meter solar PV added back. These forecasts are all obtained from the 2016 Gold Book. The baseline forecast includes the impacts of energy efficiency, distributed energy resources, and behind-the-meter solar PV. The econometric forecast does not include those impacts. The baseline forecast with solar PV has the behind-the-meter solar PV MW forecast added back to the baseline forecast. This forecast is used for the resource adequacy study where behind-the-meter solar PV is modeled as a generating resource.

The demand-side management impacts included, or accounted for, in the 2016 Base Case forecast are based upon actual and projected spending levels and realization rates for state-sponsored programs such as the Clean Energy Fund and the NY-Sun Initiative. They also include the impacts of building codes and appliance efficiency standards and distributed generation. The NYISO reviewed and discussed with Market Participants, during meetings of the ESPWG and TPAS, projections for the potential impact of energy efficiency, solar PV, and other demand-side management impacts over the Study Period. The factors considered in developing the 2016 RNA base case forecast are included in **Appendix C**.

The assumptions for the 2016 economic growth, energy efficiency program impacts, and behind-the-meter solar PV impacts were also discussed with Market Participants during meetings of the ESPWG and TPAS in March and April of 2016. The ESPWG and TPAS reviewed and discussed the assumptions used in the 2016 RNA base case forecast in accordance with procedures established for the RNA.

The annual average energy growth rate of the baseline forecast in the 2016 Gold Book decreased to -0.16%, as compared to 0.16% in the 2014 Gold Book. The 2016 Gold Book's annual average baseline summer peak demand growth decreased to 0.21%, as compared to 0.83% in the 2014 Gold Book. The lower energy growth rate is attributed to both the economy and the continued impact of energy efficiency and behind-the-meter solar PV. While these factors had a smaller impact on summer peak growth than on annual energy growth, peak growth is still expected to be lower in 2016 than it was in 2014. To account for the risk that not all energy efficiency and solar PV impacts will be realized, a high-load growth scenario is modeled.

**Table 4-1** below summarizes the three forecasts used in the 2016 RNA. **Table 4-2** shows a comparison of the baseline forecasts and energy efficiency program impacts contained in the 2014 RNA and the 2016 RNA. **Figure 4-1** and **Figure 4-2** present actual, weather-normalized forecasts of annual energy and summer peak demand for the 2016 RNA. **Figure 4-3** and **Figure 4-4** present the NYISO’s projections of annual energy and summer peak demand in the 2016 RNA for energy efficiency, distributed generation, and behind-the-meter solar PV.

**Table 4-1: 2016 RNA Econometric, Baseline, and Baseline with SPV Forecasts Added Back In**

**Econometric, Baseline and Adjusted Energy Forecasts**

<b>Annual GWh</b>	2016	2017	2018	2019	2020	2021	2022	2023	2024	2025	2026
2016 Econometric Forecast	163,243	164,818	166,439	167,715	168,804	169,420	170,548	171,772	172,929	174,016	175,103
2016 Baseline Forecast	159,382	158,713	158,431	158,099	157,700	156,903	156,785	156,795	156,800	156,779	156,777
+ 2016 Solar PV Forecast	1,053	1,450	1,767	2,067	2,355	2,632	2,882	3,124	3,334	3,512	3,661
2016 Baseline With SPV	160,435	160,163	160,198	160,166	160,055	159,535	159,667	159,919	160,134	160,291	160,438

**Energy Impacts of Energy Efficiency, Distributed Generation & Solar PV**

<b>Cumulative GWh</b>	2016	2017	2018	2019	2020	2021	2022	2023	2024	2025	2026
Solar PV	1,053	1,450	1,767	2,067	2,355	2,632	2,882	3,124	3,334	3,512	3,661
EE & Distributed Generation	2,808	4,655	6,241	7,549	8,749	9,885	10,881	11,853	12,795	13,725	14,665
Total	3,861	6,105	8,008	9,616	11,104	12,517	13,763	14,977	16,129	17,237	18,326

**Econometric, Baseline and Adjusted Summer Peak Forecasts**

<b>Summer Peak MW</b>	2016	2017	2018	2019	2020	2021	2022	2023	2024	2025	2026
2016 Econometric Forecast	34,055	34,533	34,922	35,243	35,487	35,747	36,005	36,261	36,497	36,745	37,018
2016 Baseline Forecast	33,360	33,363	33,404	33,477	33,501	33,555	33,650	33,748	33,833	33,926	34,056
+ 2016 Solar PV Forecast	258	363	421	471	518	565	606	645	682	720	747
2016 Baseline With SPV	33,618	33,726	33,825	33,948	34,019	34,120	34,256	34,393	34,515	34,646	34,803

**Summer Peak Demand Impacts of Energy Efficiency, Distributed Generation & Solar PV**

<b>Cumulative MW</b>	2016	2017	2018	2019	2020	2021	2022	2023	2024	2025	2026
Solar PV	258	363	421	471	518	565	606	645	682	720	747
EE & Distributed Generation	437	807	1,097	1,295	1,468	1,627	1,749	1,868	1,982	2,099	2,215
Total	695	1,170	1,518	1,766	1,986	2,192	2,355	2,513	2,664	2,819	2,962

**Table 4-2: Comparison of 2014 RNA & 2016 Baseline Forecasts**

**Comparison of Baseline Energy Forecasts - 2014 & 2016 RNA (GWh)**

<b>Annual GWh</b>	2014	2015	2016	2017	2018	2019	2020	2021	2022	2023	2024	2025	2026
2014 RNA Baseline	163,161	163,214	163,907	163,604	163,753	164,305	165,101	164,830	164,975	165,109	165,721		
2016 RNA Baseline			160,435	160,163	160,198	160,166	160,055	159,535	159,667	159,919	160,134	160,291	160,438
Change from 2014 RNA			-3,472	-3,441	-3,555	-4,139	-5,046	-5,295	-5,308	-5,190	-5,587	NA	NA

**Comparison of Baseline Peak Forecasts - 2014 & 2016 RNA (MW)**

<b>Annual MW</b>	2014	2015	2016	2017	2018	2019	2020	2021	2022	2023	2024	2025	2026
2014 RNA Baseline	33,666	34,066	34,412	34,766	35,111	35,454	35,656	35,890	36,127	36,369	36,580		
2016 RNA Baseline			33,360	33,363	33,404	33,477	33,501	33,555	33,650	33,748	33,833	33,926	34,056
Change from 2014 RNA			-1,052	-1,403	-1,707	-1,977	-2,155	-2,335	-2,477	-2,621	-2,747	NA	NA

**Comparison of Energy Impacts from Statewide Energy Efficiency & Distributed Generation - 2014 RNA & 2016 RNA (GWh)**

	2014	2015	2016	2017	2018	2019	2020	2021	2022	2023	2024	2025	2026
2014 RNA Baseline	1,361	3,096	4,637	5,933	6,987	7,993	8,977	9,879	10,766	11,646	12,513		
2016 RNA Baseline			2,808	4,655	6,241	7,549	8,749	9,885	10,881	11,853	12,795	13,725	14,665
Change from 2014 RNA			-1,829	-1,278	-746	-444	-228	6	115	207	282	NA	NA

**Comparison of Peak Impacts from Statewide Energy Efficiency & Distributed Energy - 2014 RNA & 2016 RNA (MW)**

	2014	2015	2016	2017	2018	2019	2020	2021	2022	2023	2024	2025	2026
2014 RNA Baseline	224	491	748	925	1,091	1,243	1,401	1,545	1,690	1,832	2,079		
2016 RNA Baseline			437	807	1,097	1,295	1,468	1,627	1,749	1,868	1,982	2,099	2,215
Change from 2014 RNA			-311	-118	6	52	67	82	59	36	-97	NA	NA



Figure 4-1: 2016 Econometric, Baseline and Baseline with SPV Energy Forecasts

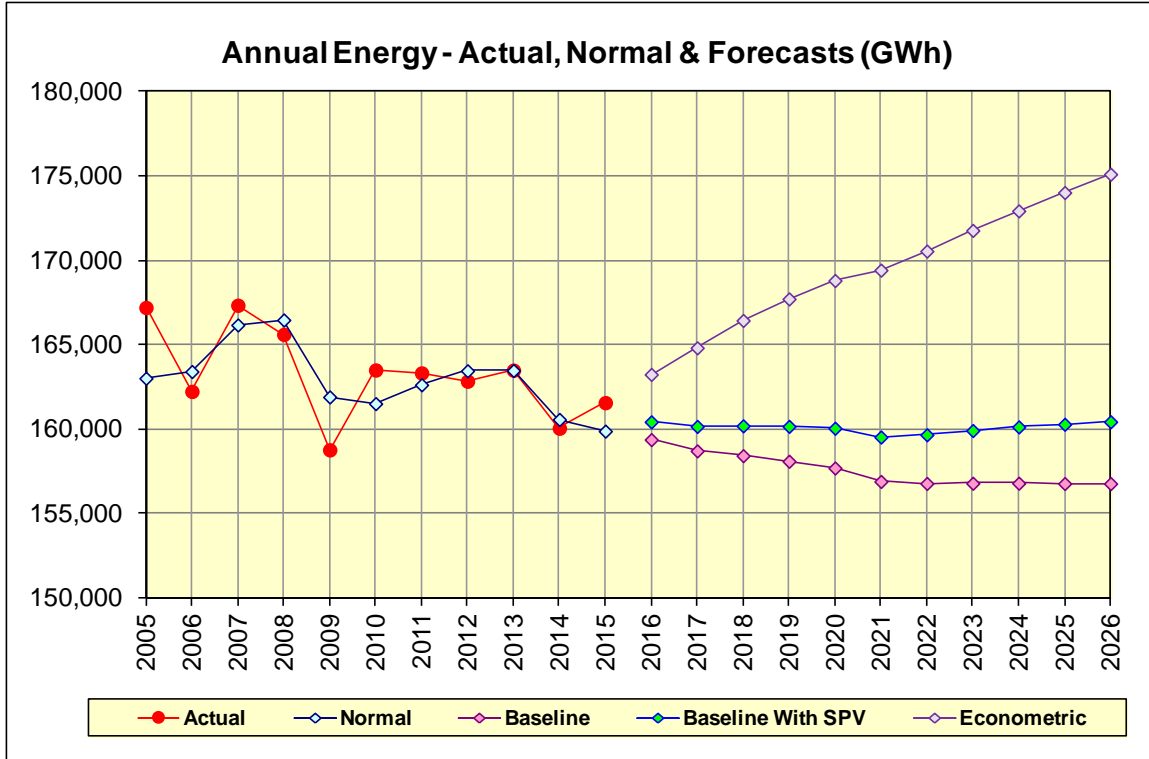
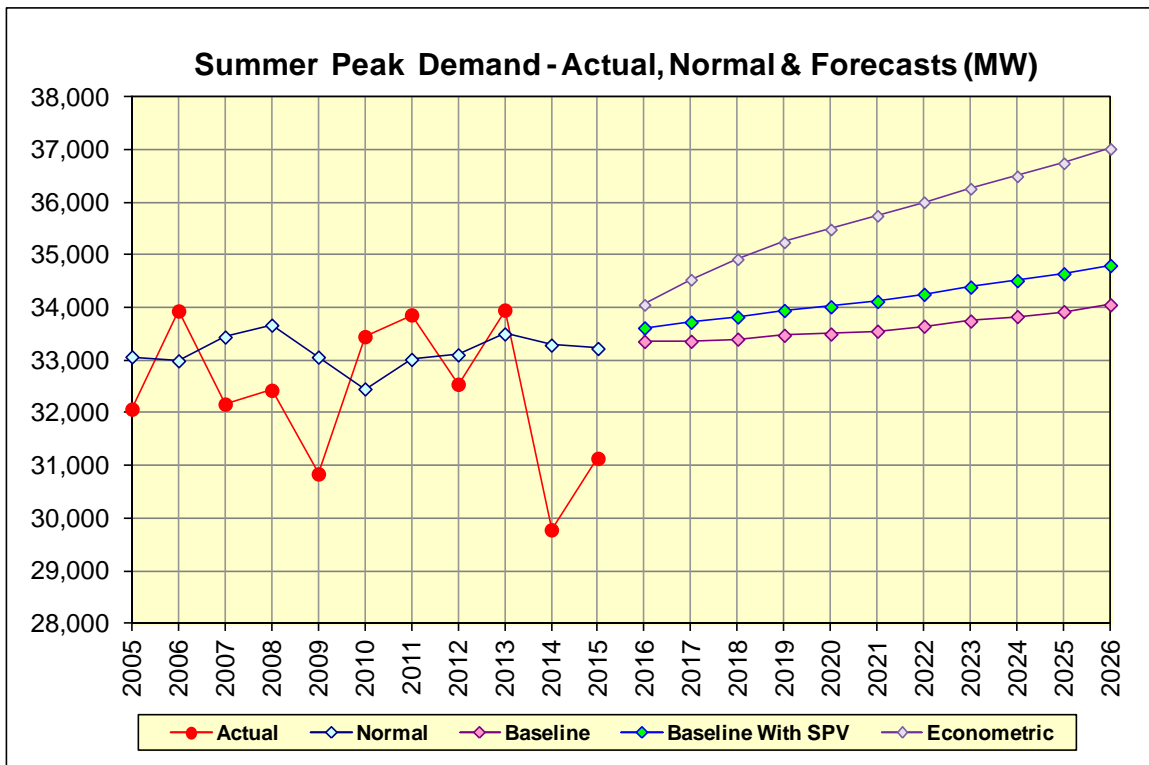
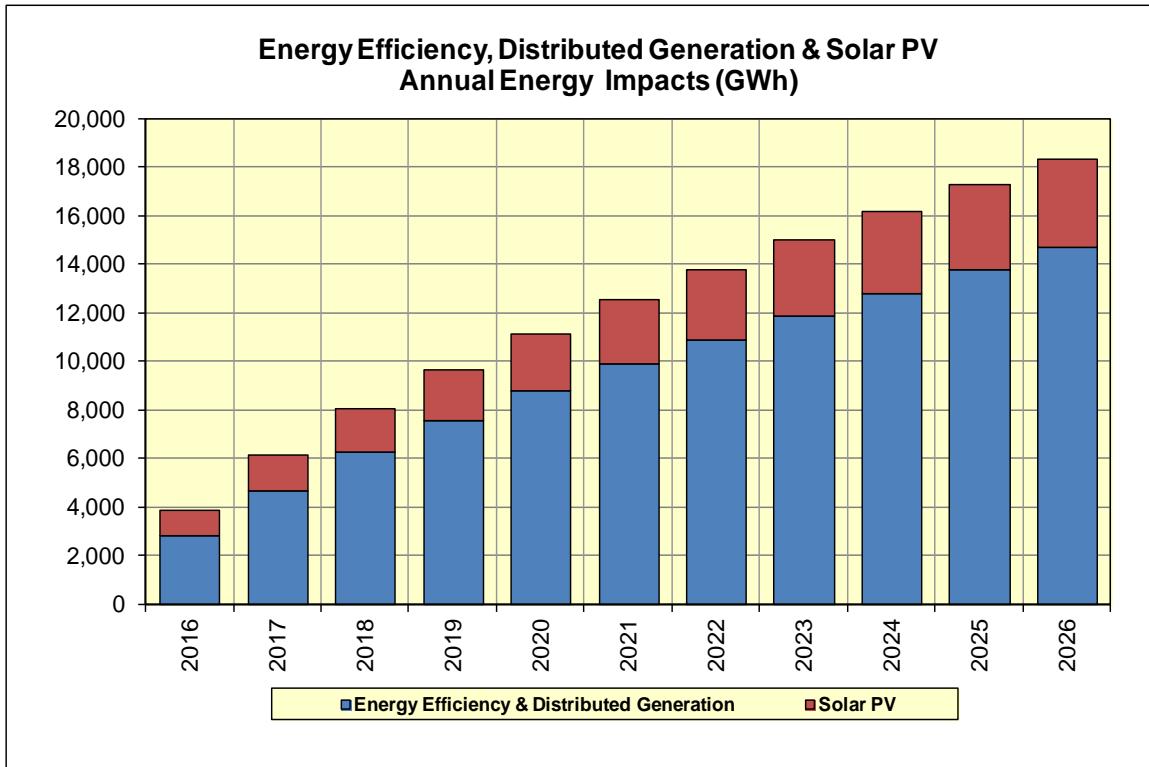


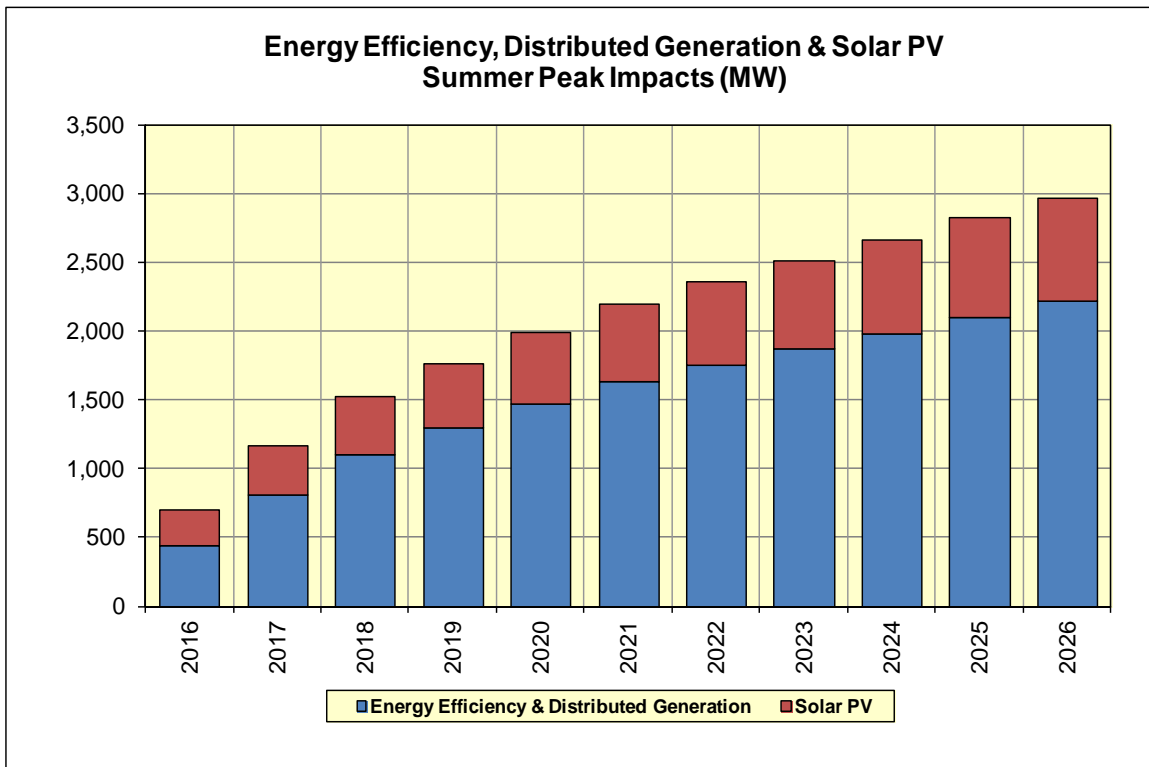
Figure 4-2: Econometric, Baseline and Baseline with SPV Summer Peak Demand Forecast



**Figure 4-3: 2016 Energy Efficiency & Behind-the-Meter Solar PV – Annual Energy**



**Figure 4-4: 2016 Energy Efficiency & Behind-the-Meter Solar PV – Summer Peak**



In the 2016 RNA, the baseline forecast with behind-the-meter solar PV added back in is used as the load forecast for the resource adequacy base case. The purpose of using that baseline forecast as the load forecast is to properly account for the uncertainty in the load forecast resulting from solar PV as an intermittent resource. The load shapes used in the study were adjusted consistent with the NYISO’s past practice from the historic shape to a shape that meets the forecasted criteria of zonal peak, NYCA peak, and G-J Locality peak.

To model the behind-the-meter solar PV resource, zonal shapes were created by aggregating measured irradiance data from New York weather stations for years 2011 through 2015. This information was used in conjunction with General Electric’s Multi-Area Reliability Simulation (MARS) probabilistic shape selection algorithm to introduce a degree of variability and intermittency into the solar PV model. The ensemble average of the annual shapes meets the forecast for solar PV contribution at the time of NYCA peak.

The combination of the load shapes with the solar shapes results in a set of net load shapes that, at time of NYCA peak, meets the criteria of the baseline forecast. Discretely modeling behind-the-meter solar PV as a resource also offers the benefit of being able to adjust the amount of resource available across the system.

**Table 4-3:** Forecast of Solar PV BTM Reductions in Coincident Summer Peak Demand (MW)

Year	A	B	C	D	E	F	G	H	I	J	K	NYCA
2016	10	6	15	2	9	31	30	3	6	25	121	258
2017	14	7	20	2	13	41	37	5	8	43	173	363
2018	16	10	24	2	14	47	46	5	10	52	195	421
2019	18	12	28	3	16	52	54	5	11	62	210	471
2020	21	15	33	3	18	57	63	5	12	69	222	518
2021	24	18	37	4	20	62	71	7	13	78	231	565
2022	27	21	41	4	23	66	80	7	14	89	234	606
2023	30	24	45	4	25	69	87	7	16	101	237	645
2024	32	27	48	5	26	72	93	7	18	114	240	682
2025	34	29	51	5	28	74	98	10	20	128	243	720
2026	36	31	53	5	29	75	101	10	21	139	247	747

#### 4.2. Forecast of Special Case Resources

---

The 2016 RNA Special Case Resource (SCR) MW levels are based on the 2016 Gold Book value of 1,248 MW, adjusted for their performance. Transmission security analysis, which evaluates normal transfer criteria, does not consider SCRs.

#### 4.3. Capacity Resource Additions and Removals

---

Since the 2014 RNA and CRP, resources have been added to the system, some mothball notices have been withdrawn and the associated facilities have returned to the system, and some resources have been removed. A total of 1,078 MW has been added to the 2016 RNA Base Case as new generation. Meanwhile, a total of 2,573 MW has been removed from the 2014 RNA and CRP Base Case because these units are currently in a deactivation state (*e.g.*, retired, mothballed, or proposed to retire/mothball). The comparison of generation status between the 2014 RNA and CRP and 2016 RNA is detailed in **Table 4-4** and **Table 4-5** below. The MW values represent the Capacity Resources Interconnection Service (CRIS) MW values as shown in the 2016 Gold Book.

In addition to the projects that met the 2016 RNA inclusion rules (listed in **Table 4-4**), a number of other projects in the NYISO interconnection study queue are also moving forward through the interconnection process, but have not yet been offered as market solutions in this process. Some of these additional generation resources have either accepted their cost allocation as part of a Class Year Facilities Study process or are included in the currently ongoing 2015 Class Year Facilities Study. These projects are listed in the Gold Book 2016 and also in **Table 4-6** and **Table 4-7** below.

**Table 4-4:** Generation Additions Included in the 2016 RNA Base Case

Project Name	Zone	Requested CRIS MW	2016 RNA <i>(1st year of Base Case inclusion)</i>	2014 CRP* Status
CPV Valley Energy Center	G	680	2018	O/S
Taylor Biomass	G	19	2018	I/S
Copenhagen Wind	E	79.9	2018	O/S
East River 1 Uprate	J	12.1	2017	O/S
East River 1 Uprate	J	12.1	2017	O/S
Black Oak Wind	C	0	2017	O/S
Sithe Independence Uprate	C	43	2017	O/S
Marble River Wind	D	215.2	2017	O/S
HQ-US <i>(External CRIS Rights)</i>	E	20	2017	O/S
Stony Creek Uprate	C	5.9	2017	O/S
Bowline 2 Uprate	G	10	2017	O/S
<b>Total</b>		<b>1,097</b>		
<b>Additions from 2014 RNA</b>		<b>1,078</b>		

\* The 2014 RNA Base Case was subsequently updated in the 2014 CRP, therefore the 2014 CRP Base Case is used as the reference.

O/S: Out-of-Service; I/S: In-Service

Table 4-5: 2016 RNA Generation Deactivations

OWNER / OPERATOR	STATION UNIT	ZONE	CRIS	2016 RNA Status	2014 CRP Status
Erie Blvd. Hydro - Seneca Oswego	Seneca Oswego Fulton	C	0.7	O/S	O/S
Erie Blvd. Hydro - Seneca Oswego	Seneca Oswego Fulton	C	0.3	O/S	O/S
Long Island Power Authority	Montauk Units #2, #3,	K	6.0	O/S	O/S
NRG Power Marketing LLC	Dunkirk 2	A	96.2	O/S	I/S
NRG Power Marketing LLC	Dunkirk 3	A	201.4	O/S	I/S
NRG Power Marketing LLC	Dunkirk 4	A	199.1	O/S	I/S
ReEnergy Chateaugay LLC	Chateaugay Power	D	18.6	O/S	O/S
Rochester Gas and Electric Corp.	Station 9	B	15.8	O/S	O/S
Syracuse Energy Corporation	Syracuse Energy ST1	C	11.0	O/S	O/S
Syracuse Energy Corporation	Syracuse Energy ST2	C	58.9	O/S	O/S
TC Ravenswood, LLC	Ravenswood 07	J	16.5	O/S	O/S
TC Ravenswood, LLC	Ravenswood 3-3	J	37.7	O/S	O/S
Erie Blvd. Hydro - North Salmon	Hogansburg	D	0.3	O/S	I/S
Niagara Generation LLC	Niagara Bio-Gen	A	50.5	O/S	I/S
NRG Power Marketing LLC	Astoria GT 05	J	16.0	O/S	I/S
NRG Power Marketing LLC	Astoria GT 07	J	15.5	O/S	I/S
NRG Power Marketing LLC	Astoria GT 12	J	22.7	O/S	I/S
NRG Power Marketing LLC	Astoria GT 13	J	24.0	O/S	I/S
NRG Power Marketing LLC	Dunkirk 2	A	97.2	O/S	O/S starting May 2015
NRG Power Marketing LLC	Huntley 67	A	196.5	O/S	I/S
NRG Power Marketing LLC	Huntley 68	A	198.0	O/S	I/S
Cayuga Operating Company, LLC	Cayuga 1	C	154.1	O/S starting July 1, 2017	O/S starting July 1, 2017
Cayuga Operating Company, LLC	Cayuga 2	C	154.7	O/S starting July 1, 2017	O/S starting July 1, 2017
Entergy Nuclear FitzPatrick LLC	FitzPatrick 1	C	858.9	O/S	I/S
R.E. Ginna Nuclear Power Plant, LLC	Ginna	B	582.0	O/S	I/S
NRG Power Marketing LLC	Astoria GT 08	J	15.3	O/S	I/S
NRG Power Marketing LLC	Astoria GT 10	J	24.9	O/S	I/S
NRG Power Marketing LLC	Astoria GT 11	J	23.6	O/S	I/S
TC Ravenswood, LLC	Ravenswood 04	J	15.2	O/S	I/S
TC Ravenswood, LLC	Ravenswood 05	J	15.7	O/S	I/S
TC Ravenswood, LLC	Ravenswood 06	J	16.7	O/S	I/S
		<b>Total</b>	3,144		
		<b>New deactivations from 2014 RNA</b>	<b>2,573</b>		

**Table 4-6: Additional Proposed Generation Projects from the 2016 Gold Book**

QUE UE POS.	OWNER / OPERATOR	STATION UNIT	ZONE	DATE	REQUEST ED CRIS (MW) <sup>1</sup>	CRIS <sup>1</sup> (MW)	SUMMER (MW)	UNIT TYPE	CLASS YEAR	Included in 2016 RNA
<b>Completed Class Year Facilities Study</b>										
349	Taylor Biomass Energy Mont., LLC	Taylor Biomass	G	2018/04	N/A	19.0	19	Solid Waste	2011	yes
251	CPV Valley, LLC	CPV Valley Energy Center	G	2017/10	N/A	680.0	677.6	Combined Cycle	2011	yes
197	PPM Roaring Brook, LLC / PPM	Roaring Brook Wind	E	2017/12	N/A	0.0	78	Wind Turbines	2008	no
<b>Class Year 2015</b>										
431	Greenidge Generation	Greenidge Unit #4	C	2016/09	106.3	TBD	106.3	Stream Turbine		no
395	Copenhagen Wind Farm, LLC	Copenhagen Wind	E	2016/10	79.9	TBD	79.9	Wind Turbines		yes
397	EDP Renewables North America	Jericho Rise Wind	D	2017/07	77.7	TBD	77.7	Wind Turbines		no
401	Caithness Long Island II, LLC	Caithness Long Island II	K	2019/05	744.0	TBD	744	Combined Cycle		no
<b>Class Year 2015 CRIS-Only Requests</b>										
	Marble River, LLC	Marble River Wind	D	N/A	215.2	TBD	N/A			yes
	HQ-US	HQ-US (External CRIS Rights)	E	N/A	20.0	TBD	N/A			yes
	ConEd	East River 1 Uprate	J	N/A	10.0	TBD	N/A			yes
	ConEd	East River 2 Uprate	J	N/A	10.0	TBD	N/A			yes
	Bowline	Bowline 2	G	N/A	10.0	TBD	N/A			yes
	East Coast Power, LLC	Linden Cogeneration Plant	J	N/A	35.5	TBD	N/A			no
	Astoria Energy	CC1 and CC2	J	N/A	27.8	TBD	N/A			no
	Stony Creek Energy, LLC	Stony Creek	C	N/A	5.9	TBD	N/A			yes
<b>Future Class Year Candidates</b>										
270	Wind Development Contract Co, LLC	Hounsfield Wind	E	TBD	TBD	TBD	244.8	Wind Turbines		no
382	Astoria Generating Co.	South Pier Improvement	J	2016/06	TBD	TBD	91.2	Combustion Turbines		no
383	NRG Energy, Inc.	Bowline Gen. Station Unit #3	G	2016/06	TBD	TBD	775	Combined Cycle		no
440	Erie Power, LLC	Erie Power	A	2016/08	TBD	TBD	79.4	Combined Cycle		no
467	Invenergy Solar Development, LLC	Tallgrass Solar	K	2016/11	TBD	TBD	25	Solar		no
396	Baron Winds, LLC	Baron Winds	C	2016/12	TBD	TBD	300	Wind Turbines		no
361	US PowerGen Co.	Luyster Creek Energy	J	2017/06	TBD	TBD	401	Combined Cycle		no
372	Dry Lots Wind, LLC	Dry Lots Wind	E	2017/11	TBD	TBD	33	Wind Turbines		no
371	South Mountain Wind, LLC	South Mountain Wind	E	2017/12	TBD	TBD	18	Wind Turbines		no
276	Air Energie TCI, Inc.	Crown City Wind	C	2018/12	TBD	TBD	90	Wind Turbines		no
387	Cassadaga Wind, LLC	Cassadaga Wind	A	2018/12	TBD	TBD	126	Wind Turbines		no
444	Cricket Valley Energy Center, LLC	Cricket Valley Energy Center II	G	2019/08	TBD	TBD	1020	Combined Cycle		no
347	Franklin Wind Farm, LLC	Franklin Wind	E	2019/12	TBD	TBD	50.4	Wind Turbines		no
Total proposed summer MW not included in 2016 RNA							3,254			

**Table 4-7:** Additional Proposed Transmission Projects from the 2016 Gold Book

Merchant Queue Position	Developer	Terminals		Summer rating	Project Description /	Class Year	Included in 2016 RNA
<b>Merchant Transmission Projects</b>							
358	West Point Partners	Leeds 345kV	Buchanan North 345kV	1,000	-/+ 320kV Bipolar HVDC cable	TBD	no
305	Transmission Developers Inc.	Hertel 735kV (Quebec)	Astoria Annex 345kV	1,000	-/+ 320kV Bipolar HVDC cable	TBD	no
363	Poseidon Transmission 1, LLC	Deans 500kV (PJM)	Ruland Road 138kV	500	-/+ 200kV Monopole HVDC cable	TBD	no
				Total proposed summer MW not included in 2016 RNA	2,500		

#### 4.4. Local Transmission Plans

As part of the NYISO’s Local Transmission Planning Process (LTPP), Transmission Owners presented their LTPs to the NYISO and stakeholders in the fall of 2015. The NYISO reviewed the LTPs and included them in the 2016 Gold Book. The firm transmission plans included in the 2016 RNA Base Case are reported in **Appendix D**. Initial assumptions for inclusion in the RNA were based on data as of May 1, 2016, and updated based on stakeholder input as of July 5, 2016.

The following plans were received for the July 5 updates, and met the RNA Base Case inclusion rules:

- NYSEG/RGE’s terminal upgrades (updated LTP), increasing the ratings on Stolle Road-Gardenville 230 kV Line #66, with a projected in-service date of 2019.
- NYSEG/RGE’s terminal upgrades (updated LTP), increasing the ratings on both Clay-Pannell PC1 and PC2 345 kV lines, with a projected in-service date of 2019.

#### 4.5. Bulk Transmission Projects

Since the 2014 RNA, additional transmission projects have met the inclusion rules and are modeled in the 2016 RNA Base Case. One project, which was included in the 2014 RNA, was removed from the system model because it is no longer proceeding.

The National Grid installation of 1.5% series reactors at Packard on the two Packard – Huntley 230 kV lines (77 and 78) are included for all years of the study. These devices have been installed and are in-service.

The original Transmission Owners’ Transmission Solutions (TOTS) collection of projects included a project for additional cooling capability on the 345 kV cables from Farragut to Gowanus and from Gowanus to Goethals to increase the thermal ratings of these facilities. Due



to the subsequent cancellation of the wheeling agreement between Con Edison and PSEG, Con Edison is no longer proceeding with the cable cooling project. As a result, the cooling project, which was included in the 2014 RNA, is not included in the 2016 RNA Base Case.

The Orange and Rockland (O&R) North Rockland station tapping the Ladentown - Buchanan South 345 kV line (Y88) is modeled as in-service in the 2016 RNA Base Case starting in 2018. The North Rockland project includes a 345/138 kV transformer that will connect to the existing O&R Lovett substation.

Series compensation of 21% on the Leeds – Hurley Avenue 345 kV (301) line at Hurley Avenue is modeled as in-service in the 2016 RNA Base Case starting in 2018. This project is a System Deliverability Upgrade (SDU) associated with the CPV Valley Energy Center generation project, which is also modeled as in-service in the same year.

A Con Edison project to install a new phase angle regulator (PAR) controlled path between Rainey 345 kV and Corona 138 kV stations is included in the RNA Base Case starting in 2019. The project consists of a 345/138 kV transformer and 138 kV PAR at Rainey with a 138 kV cable to Corona.

#### 4.6. Base Case Peak Load and Resource Ratios

---

The capacity used for the 2016 RNA's resource adequacy base case peak load and resource ratio is the existing generation adjusted for the unit retirements, mothballing, and proposals to retire or mothball announced as of April 15, 2016, along with the new resource additions that met the base case inclusion rules set forth in Section 3.1 of the RPP Manual. This capacity is summarized in **Table 4-8**, below.

**Table 4-8: NYCA Peak Load and Resource Ratios 2017 through 2026**

Year	2017	2018	2019	2020	2021	2022	2023	2024	2025	2026
<b>Peak Load (MW) - Table I-2a GB 2016</b>										
NYCA*	33,363	33,404	33,477	33,501	33,555	33,650	33,748	33,833	33,926	34,056
Zone J*	11,696	11,717	11,756	11,760	11,761	11,785	11,807	11,830	11,851	11,907
Zone K*	5,381	5,354	5,348	5,340	5,370	5,414	5,464	5,501	5,550	5,595
Zone G-J	16,181	16,206	16,251	16,255	16,260	16,292	16,324	16,357	16,387	16,459
<b>Resources (MW)</b>										
Capacity**	36,867	37,644	37,644	37,644	37,644	37,644	37,644	37,644	37,644	37,644
Net Purchases & Sales	1,849	1,584	1,593	2,255	2,255	2,255	2,255	2,255	2,255	2,255
SCR	1,248	1,248	1,248	1,248	1,248	1,248	1,248	1,248	1,248	1,248
<b>NYCA</b> Total Resources	<b>39,965</b>	<b>40,476</b>	<b>40,485</b>	<b>41,147</b>	<b>41,147</b>	<b>41,147</b>	<b>41,147</b>	<b>41,147</b>	<b>41,147</b>	<b>41,147</b>
Capacity/Load Ratio	110.5%	112.7%	112.4%	112.4%	112.2%	111.9%	111.5%	111.3%	111.0%	110.5%
Cap+NetPurch/Load Ratio	116.0%	117.4%	117.2%	119.1%	118.9%	118.6%	118.2%	117.9%	117.6%	117.2%
Cap+NetPurch+SCR/Load Ratio	119.8%	121.2%	120.9%	122.8%	122.6%	122.3%	121.9%	121.6%	121.3%	120.8%
<b>Zone J</b> Capacity**	9,554	9,554	9,554	9,554	9,554	9,554	9,554	9,554	9,554	9,554
<b>Zone J</b> Cap+UDR+SCR/Load Ratio	93.3%	93.1%	92.8%	92.8%	92.8%	92.6%	92.4%	92.2%	92.1%	91.7%
<b>Zone K</b> Capacity**	5,287	5,287	5,287	5,287	5,287	5,287	5,287	5,287	5,287	5,287
<b>Zone K</b> Cap+UDR+SCR/Load Ratio	117.9%	118.5%	118.6%	118.8%	118.1%	117.2%	116.1%	115.3%	114.3%	113.4%
<b>Zone G-J</b> Capacity**	14,659	15,356	15,356	15,356	15,356	15,356	15,356	15,356	15,356	15,356
<b>Zone G-J</b> Cap+UDR+SCR/Load Ratio	99.5%	103.6%	103.3%	103.3%	103.3%	103.1%	102.9%	102.7%	102.5%	102.0%

\*NYCA load values represent baseline coincident summer peak demand. Zones J and K load values represent non-coincident summer peak demand. Aggregate Zones G-J values represent G-J coincident peak, which is non-coincident with NYCA.

\*\*NYCA Capacity values include resources electrically internal to NYCA, additions, reratings, and retirements (including proposed retirements and mothballs). Capacity values reflect the lesser of CRIS and DMNC values. NYCA resources include the net purchases and sales as per the Gold Book. Zonal totals include the awarded UDRs for those capacity zones as the actual MW are considered confidential.

Notes:

- SCR - Forecasted ICAP value based on 2016 Gold Book. This figure changed for the Final RNA MARS Base Case to 1,192 MW with the July auctions.
- Wind generator summer capacity is counted as 100% of nameplate rating.
- Behind-the-meter solar PV impacts are reflected back into the load levels shown for proper accounting.

As shown in the **Table 4-8** above, the total NYCA capacity margin (defined as capacity above the baseline load forecast) varies between 19.8% in 2017 (year 1), 22.6% in 2021 (year 5), and 20.8 % in 2026 (year 10). For relative comparison purposes, these percentages are significantly above the required 17.5 % NYCA Installed Reserve Margin (IRM) for the 2016-2017 Capability Year.

To further demonstrate the increase in the capacity margin, comparing the details of its capacity margin calculation for mid-year 2021 between the 2014 RNA and the 2016 RNA shows that:

1. The 2016 RNA NYCA baseline load forecast is 2,335 MW lower for 2021;
2. The NYCA SCRs projection is 59 MW higher for 2021; and
3. The NYCA capacity resources are 577 MW higher for 2021.

This increase in net resources contributes to the elimination of the resource adequacy need in the 2016 RNA as compared with those Reliability Needs initially identified in the 2014 RNA.

**Table 4-9: Load/Resources Comparison of Year 2021 (MW)**

Year 2021	2016 RNA	2014 RNA	Delta	2016 RNA	2014 CRP	Delta
<b>Baseline Load</b>	33,555	35,890	-2,335*	33,555	35,890	-2,210*
<b>SCR</b>	1,248	1,189	59	1,248	1,189	59
<b>Total Capacity without SCRs</b>	39,899	39,322	577	39,899	41,318	-1,294
<b>Net Change in Capacity less Load</b>			<b>2,971</b>	<b>2016 RNA to 2014 CRP</b>		<b>975</b>

\*Both the 2014 and 2016 RNA baseline load forecasts included reductions due to the effect of solar PV additions. The 2016 RNA resource adequacy assessment started with the baseline load forecast, added the behind-the-meter solar PV forecast MW back into the baseline load, and then explicitly modeled solar PV MW projections to allow for better probabilistic simulation.

#### 4.7. Methodology for the Determination of Needs

The OATT defines Reliability Needs in terms of total deficiencies relative to Reliability Criteria determined from the assessments of the BPTF performed in the RNA. There are two steps to analyzing the reliability of the BPTF. The first is to evaluate the security of the transmission system; the second is to evaluate the adequacy of the system, subject to the security constraints. The NYISO planning procedures include both security and adequacy

assessments. The transmission adequacy and the resource adequacy assessments are performed together.

Transmission security is the ability of the power system to withstand disturbances, such as short circuits or unanticipated loss of system elements, and continue to supply and deliver electricity. Security is assessed deterministically with potential disturbances being applied without concern for the likelihood of the disturbance in the assessment. These disturbances (single-element and multiple-element contingencies) are categorized as the design criteria contingencies, explicitly defined in the NYSRC Reliability Rules. The impacts when applying these design criteria contingencies are assessed to ensure that no thermal loading, voltage, or stability violations will occur. In addition, the NYISO performs a short circuit analysis to determine if the system can clear faulted facilities reliably under short circuit conditions. The NYISO “Guideline for Fault Current Assessment” describes the methodology for that analysis.

The analysis for the transmission security assessment is conducted in accordance with NERC Reliability Standards, NPCC Transmission Design Criteria, and the NYSRC Reliability Rules. AC contingency analysis is performed on the BPTF to evaluate thermal and voltage performance under design contingency conditions using the Siemens PTI PSS®E and PowerGEM TARA programs. Generation is dispatched to match load plus system losses, while respecting transmission security. Scheduled inter-area transfers modeled in the base case between the NYCA and neighboring systems are held constant.

For the RNA, approximately 1,000 design criteria contingencies are evaluated under N-1, N-1-0, and N-1-1 normal transfer criteria conditions to ensure that the system is planned to meet all applicable reliability criteria. To evaluate the impact of a single event from the normal system condition (N-1), all design criteria contingencies are evaluated including: single element, common structure, stuck breaker, generator, bus, and HVDC facilities contingencies. An N-1 violation occurs when the power flow on the monitored facility is greater than the applicable post-contingency rating. N-1-0 and N-1-1 analysis evaluates the ability of the system to meet design criteria after a critical element has already been lost. For N-1-0 and N-1-1 analysis, single element contingencies are evaluated as the first contingency; the second contingency (N-1-1) includes all design criteria contingencies evaluated under N-1 conditions.

The process of N-1-0 and N-1-1 testing allows for corrective actions including generator redispatch, PAR adjustments, and HVDC adjustments between the first and second contingency. These corrective actions prepare the system for the next contingency by reducing the flow to normal rating after the first contingency. An N-1-0 violation occurs when the flow cannot be reduced to below the normal rating following the first contingency. An N-1-1 violation occurs when the facility is reduced to below the normal rating following the first

contingency, but the power flow following the second contingency exceeds the applicable post-contingency rating.

N-1-1 analysis attempts to secure the system after each first contingency. This is accomplished through generation redispatch and PAR adjustments. Where there are several overloads after a first contingency, generation and PAR adjustments are made to minimize the overloads, but not necessarily the number of overloads.

Resource adequacy is the ability of the electric systems to supply the aggregate electricity demand and energy requirements of the customers at all times, taking into account scheduled and unscheduled outages of system elements. Resource adequacy considers the transmission systems, generation resources, and other capacity resources, such as demand response. Resource adequacy assessments are performed on a probabilistic basis to capture the random natures of system element outages. If a system has sufficient transmission and generation, the probability of an unplanned disconnection of firm load is equal to or less than the system's standard, which is expressed as a LOLE. The New York State bulk power system is planned to meet an LOLE that, at any given point in time, is less than or equal to an involuntary load disconnection that is not more frequent than once in every 10 years, or 0.1 events per year. This requirement forms the basis of New York's Installed Reserve Margin (IRM) requirement and is on a statewide basis.

If Reliability Needs are identified, various amounts and locations of compensatory MW required for the NYCA to satisfy those needs are determined to translate the criteria violations to understandable quantities. Compensatory MW amounts are determined by adding generic capacity resources to zones to effectively satisfy the needs. The compensatory MW amounts and locations are based on a review of binding transmission constraints and zonal LOLE determinations in an iterative process to determine various combinations that will result in Reliability Criteria being met. These additions are used to estimate the amount of resources generally needed to satisfy Reliability Needs. The compensatory MW additions are not intended to represent specific proposed solutions. Resource needs could potentially be met by other combinations of resources in other areas including generation, transmission and demand response measures.

Due to the differing natures of supply and demand-side resources and transmission constraints, the amounts and locations of resources necessary to match the level of compensatory MW needs identified will vary. Resource needs could be met in part by transmission system reconfigurations that increase transfer limits, or by changes in operating protocols. Operating protocols could include such actions as using dynamic ratings for certain facilities, invoking operating exceptions, or establishing special protection systems.

The procedure to quantify compensatory MW for BPTF transmission security violations is a separate process from calculating compensatory MW for resource adequacy violations. This quantification is performed by first calculating transfer distribution factors on the overloaded facilities. The power transfer used for this calculation is created by injecting power at existing buses within the zone where the violation occurs, and reducing power at an aggregate of existing generators outside of the area.

## 5. Reliability Needs Assessment

### 5.1. Overview

---

Reliability is defined and measured through the use of the concepts of security and adequacy described in **Section 4**. This study evaluates the resource adequacy and transmission system adequacy and security of the New York BPTF over a ten-year study period. Through the RNA, the NYISO identifies Reliability Needs in accordance with applicable Reliability Criteria. Violations of this criterion are translated into MW or MVAR amounts to quantify the Reliability Need.

### 5.2. Reliability Needs for Base Case

---

Below are the principal findings of the 2016 RNA applicable to the Base Case conditions for the (2017-2026) Study Period including: transmission security assessment; short circuit assessment; resource and transmission adequacy assessment; system stability assessments; and scenario analyses.

#### 5.2.1. Transmission Security Assessment

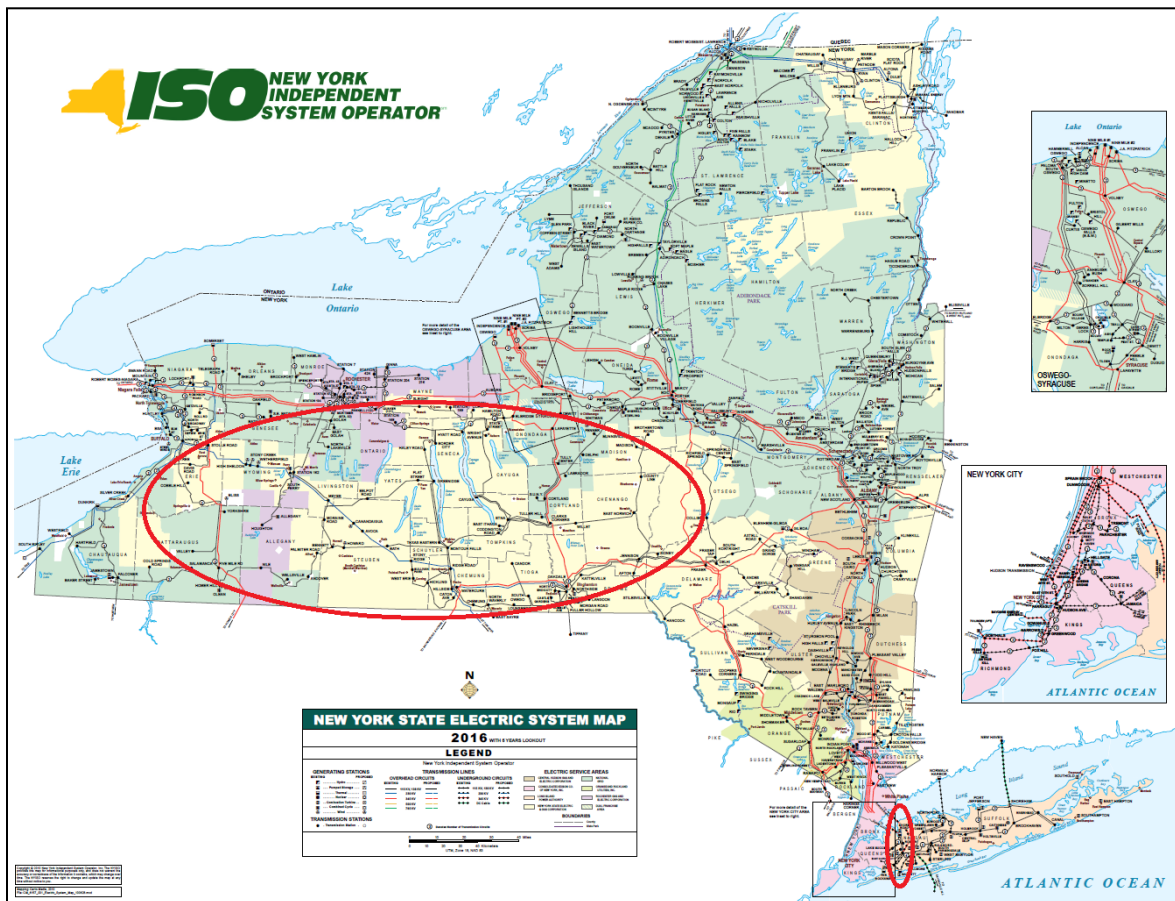
The RNA requires analysis of the security of the BPTF throughout the Study Period. The BPTF, as defined in this assessment, include all of the facilities designated by the NYISO as a Bulk Power System (BPS) element as defined by the NYSRC and NPCC, as well as other transmission facilities that are relevant to planning the New York State transmission system. To assist in the assessment, the NYISO reviewed previously completed transmission security assessments and used the most recent FERC Form 715 power flow cases, which the NYISO filed with FERC on April 1, 2016.

The transmission security analysis identifies thermal violations on the BPTF throughout the Study Period for N-1-1 conditions. Some of the identified violations for the 2016 RNA Base Case are a continuation of the violations identified in the 2014 RNA for which work is ongoing, while others represent new violations resulting from system changes modeled in the base case. **Table 5-1** provides a summary of the contingency pairs that result in the highest thermal overload on each overloaded BPTF element under N-1-1 conditions. **Table 5-3** provides a summary of the year by which a solution is needed to be in-service to resolve the transmission security

violation. **Appendix D** provides a summary of all contingency pairs that result in overloads on the BPTF for the study period.

There are two primary regions with Reliability Needs: Western & Central New York and Long Island. These Reliability Needs are generally driven by recent and proposed generator deactivations. **Figure 5-1** depicts the two regions where the loads may be impacted by transmission security constraints.

**Figure 5-1: Approximate Areas of Transmission Security Needs**



### 5.2.1.1. Western and Central New York

The preliminary transmission security analysis identified a number of thermal overloads on the BPTF in the Western and Central New York regions resulting from a lack of transmission and generating resources to serve load and support voltage in the area. Most of the identified violations were addressed by the updates described the **Section 5.2.1.3** below.



The 230 kV system between Niagara and Gardenville includes two parallel 230 kV transmission lines from Niagara to Packard to Huntley to Gardenville, including a number of taps to serve load in the Buffalo area. A third parallel 230 kV transmission line also runs from Niagara to Robinson Rd. to Stolle Rd. to Gardenville. The N-1-1 analysis shows that in 2017, Stolle-Gardenville (#66) 230 kV overloads for loss of Packard-Gardenville (#182) 115 kV followed by the loss of the two parallel Packard-Huntley (#77) and (#78) 230 kV lines which share a common tower. The overload occurs due to a lack of generation and transmission sources in the Buffalo area following the deactivation of the Dunkirk and Huntley generation plants in recent years.

The 345 kV system between Western and Central New York consists of two parallel lines between Syracuse and Rochester (Clay-Pannell 345 kV). The N-1-1 analysis shows that starting in 2017, these lines are overloaded for the loss of Stolle-Gardenville (#66) 230 kV followed by loss of the other parallel Clay-Pannell 345 kV line. Similarly, starting in 2017, Packard-Huntley (#77) 230 kV is overloaded for the loss of Stolle-Gardenville (#66) 230 kV followed by a stuck breaker at Packard 230 kV. The upcoming expiration of the Ginna Reliability Support Service Agreement (RSSA) would remove a significant amount of generation from the underlying system in the Rochester area and will drive an increased loading on the BPTF to serve load. Additionally, while the load forecast for the state has decreased overall, the load forecast in the west has increased from prior years. The combination of an overall lack of generation resources in Western and Central New York and the increased load in that area is largely responsible for the Clay-Pannell and Packard-Huntley overloads. The magnitude of the Clay-Pannell 345 kV and Packard-Huntley 230 kV overloads is directly proportional to the level of Niagara generation output. The N-1-1 analysis shows the Clay-Pannell (#2) 345 kV line loaded at 1,240 MVA in 2017, while Packard-Huntley (#77) 230 kV line is loaded at 646 MVA.

The Oakdale 345/230/115 kV station serves the Binghamton area. Starting in 2017, the N-1-1 analysis shows the Oakdale 345/115 kV #2 transformer is overloaded for the loss of the Packard-Huntley (#77) 230 kV line followed by a stuck breaker at Oakdale 345 kV. Niagara generation is required to back down following the loss of the Packard-Huntley (#77) 230 kV line, significantly reducing flow from Western New York into the Central region and increasing the loading on this source into the underlying 115 kV system. The stuck breaker at Oakdale 345 kV removes additional sources into the Binghamton area by removing a 345 kV line into Oakdale as well as a parallel

345/115 kV transformer. The loading on this facility is aggravated by the deactivation of Cayuga, scheduled to occur following the expiration of the Cayuga RSSA on June 30, 2017.

National Grid's Elbridge 345/115 kV station includes one 345/115 kV transformer that serves the Oswego and Syracuse area and the northern Finger Lakes area. Starting in 2022, the N-1-1 analysis shows an overload on the Elbridge 345/115 kV transformer for loss of the Pannell-Clay (#1) 345 kV line followed by a stuck breaker at Clay 345 kV. This overload is primarily due to power flowing east-to-west to serve load in Central New York and is exacerbated by the deactivation of the Ginna and Cayuga plants.

National Grid's Clay 345/115 kV station includes eight 115 kV transmission connections and two 345/115 kV transformers that serve the Oswego and Syracuse areas. Starting in 2017, the N-1-1 analysis shows overloads in this area on the Clay-Teall (#10) 115 kV line and the Clay-Dewitt (#3) 115 kV line. The 2014 RNA identified transmission security violations on both of these facilities. The overloads on the Clay-Teall (#10) 115 kV line and the Clay-Dewitt (#3) 115 kV line are resolved by the solutions identified in the 2014 CRP starting in 2018. As reported in the 2014 CRP, until the reconductoring on Clay-Teall (#10) line is completed, National Grid will use operating procedures as an interim measure. The operating procedures include switching the load at Pine Grove to an alternative source (Clay-Dewitt (#3) 115 kV) and local load shedding (approximately 110 MW), as necessary. Similarly, until the reconductoring on Clay-Dewitt (#3) line is completed, National Grid will use operating procedures as an interim measure. The operating procedures include switching the load at Bartell Rd. and Pine Grove to an alternative source (Clay-Teall (#10) 115 kV), switching the load at Fly Rd. to an alternative source (Teall-Dewitt (#4) 115 kV), and local load shedding (approximately 85 MW), as necessary.

Starting in 2022, the N-1-1 analysis shows an overload in this area on the Clay-Woodard (#17) 115 kV line. Similarly, starting in 2025, the N-1-1 analysis shows an overload on the Clay-Lockheed Martin (#14) 115 kV line. The overloads in this area are primarily due to power flowing from east to west on the 115 kV system to serve load in Central New York after the loss of a north-to-south 345 kV path and are exacerbated by the deactivation of the Ginna and Cayuga plants.

National Grid's Porter 345/230/115 kV station includes eight 115 kV transmission connections and two 345/115 kV transformers that serve the Utica and Syracuse areas.

The N-1-1 analysis shows that the Porter-Yahnundasis (#3) 115 kV line is overloaded starting in 2017 for the loss of Stolle-Gardenville (#66) 230 kV followed by the loss of a Porter 115 kV bus. Additionally, the N-1-1 analysis shows that the Porter-Oneida (#7) 115 kV line is overloaded starting in 2017 for loss of Porter-Yahnundasis (#3) 115 kV followed by a stuck breaker at Oswego 345 kV. These overloaded facilities were identified in the 2014 RNA and solutions were identified in the 2014 CRP starting in 2018. These overloads are due to power flowing from east to west on the 115 kV system to serve load in the Utica, Syracuse, and Finger Lakes area and are exacerbated by the deactivation of the Ginna and Cayuga plants. National Grid will use an operating procedure as an interim measure until reactors on these 115 kV lines are installed and in-service. The operating procedure includes opening the Oneida-Yahnundasis (#6) 115 kV transmission line, as necessary.

#### **5.2.1.2. Long Island**

The transmission security analysis identifies one thermal violation on the BPTF in Long Island.

LIPA's Valley Stream 138 kV station is in southwestern Long Island and includes three 138 kV transmission connections and one PAR that ties into Con Edison's 138 kV system. Starting in 2017, the East Garden City-Valley Stream (#262) 138 kV line is overloaded for the loss of the Barrett-Valley Stream (#292) 138 kV line followed by the loss of the Barrett-Valley Stream (#291) 138 kV line. The power flow on this facility is driven by the combination of LIPA load in western Long Island and the scheduled 300 MW wheel between ConEdison and LIPA. This overload has now been identified as a result of no longer reducing the wheel following an outage, for which ConEdison's contractual portion of Y50 is assumed to be delivered to ConEdison, thus reducing the portion of western Long Island load that is capable of being served through the overloaded facility from generating sources in eastern Long Island.

#### **5.2.1.3. Updated Results for Western and Central NY**

The system representation was updated to include Transmission Owners' LTP updates and changes on the BPTF after the initial results of the RNA were provided. These updates included ratings updates in the Long Island area and Clay area, an impedance correction on a 115 kV line in the central area, a load shift on a 115 kV line, and a transformer voltage schedule change. NYSEG/RGE provided LTP updates for the Stolle – Gardenville (#66) 230 kV line which increased the ratings of the line.

NYSEG/RGE also provided LTP updates that increased the ratings of each line for both Clay – Pannell (PC #1 and PC #2) 345 kV line. The in-service dates for each of these projects are 2019. The new ratings are provided in **Appendix D**.

These updates resolved the overloads on the Stolle – Garden (#66) 230 kV line, the Packard – Huntley (#77) 230 kV line, the Clay – Lockheed Martin (#14) 115 kV line, the Clay – Woodard (#17) line, the Elbridge 345/115 kV #1 transformer, the Clay – Pannell (#1) 345 kV line, and the Clay – Pannell (#2) 345 kV line. NYSEG/RG&E will use operating procedures to maintain the security of their system until the upgrades are in-service. These operating procedures include the adjustment of phase-angle regulators, use of special case resources, and possible load shedding of approximately 100 MW under baseline summer peak conditions. The procedures also include manning substations during conditions when load shedding is possible to allow for expedited isolation and restoration of the affected system. The results are reflected in **Table 5-1** and **Table 5-2**.

**Table 5-1: 2016 RNA Preliminary Transmission Security Thermal Violations**

Zone	Owner	Monitored Element	Normal Rating (MVA)	LTE Rating (MVA)	STE Rating (MVA)	2017 Flow (MVA)	2021 Flow (MVA)	2026 Flow (MVA)	First Contingency	Second Contingency
A	NYSEG	Stolle-Gardenville (#66) 230	474	478	478	509*	515*	520*	Packard-Gardenville (#182) 115	TWR Packard-Huntley 230
A	N. Grid	Packard-Huntley (#77) 230	556	644	746	646*	646*	646*	Stolle-Gardenville (#66) 230	SB Packard 230
C/B	NYPA, RG&E, N. Grid	Clay-Pannell (#1) 345	1195	1195	1195	1238*	1245*	1264*	Stolle-Gardenville (#66) 230	SB Clay 345
C/B	NYPA, RG&E, N. Grid	Clay-Pannell (#2) 345	1195	1195	1195	1240*	1247*	1266*	Stolle-Gardenville (#66) 230	SB Clay 345
C	NYSGE	Oakdale 345/115 2TR	428	556	600	565	586	613	Packard-Huntley (#77) 230	SB Oakdale 345
C	N. Grid	Elbridge 345/115 1TR	470	557	717			569*	Pannell-Clay (#1) 345	SB Clay 345
C	N. Grid	Clay-Lockheed Martin (#14) 115 (Clay-Wetzel)	220	252	280			255*	Clay-Woodard (#17) 115	SB Lafayette 345
C	N. Grid	Clay-Woodard (#17) 115 (Clay-Euclid)	220	252	280			256*	Clay-Lockheed Martin (#14) 115	SB Lafayette 345
C	N. Grid	Clay-Teall (#10) 115 (Clay-Bartell Rd-Pine Grove)	116 220	120 252	145 280	126**			Clay-Teall (#11) 115	SB Dewitt 345
C	N. Grid	Clay-Dewitt (#3) 115 (Clay-Bartell Rd)	116 220	120 252	145 280	131**			Clay-Dewitt (#13) 345	Oswego-Lafayette (#17) 345
E	N. Grid	Porter-Yahnundasis (#3) 115 (Port-Kelsey)	116	120	145	138**			Stolle-Gardenville (#66) 230	Porter Bus D 115
E	N. Grid	Porter-Oneida (#7) 115 (Porter-W. Utica)	116	120	145	125**			Porter-Yahnundasis (#3) 115	SB Oswego 345
K	LI	East Garden City-Valley Stream (#262) 138	211	291	504	293	302	316	Barrett-Valley Stream (#292) 138	Barrett-Valley Stream (#291) 138

\* Violations removed in 2<sup>nd</sup> Pass with Model updates and Interim Operating Procedures (if needed)

\*\* Violations removed due to upgrades identified in 2014 RNA that are in-service 2018 and have Interim Operating Procedures

**Table 5-2: 2016 RNA Remaining Transmission Security Thermal Violations**

Zone	Owner	Monitored Element	Normal Rating (MVA)	LTE Rating (MVA)	STE Rating (MVA)	2017 Flow (MVA)	2021 Flow (MVA)	2026 Flow (MVA)	First Contingency	Second Contingency
C	NYSGE	Oakdale 345/115 2TR	428	556	600	566	571	596	Packard-Huntley (#77) 230	SB Oakdale 345
K	LI	East Garden City-Valley Stream (#262) 138	226	285	310	300	305	329	Barrett-Valley Stream (#291) 138	Barrett-Valley Stream (#292) 138

**Table 5-3: 2016 RNA Transmission Security Reliability Need Year**

Zone	Owner	Monitored Element	Year of Need
A	NYSEG	Stolle-Gardenville (#66) 230*	2017
A	N. Grid	Packard-Huntley (#77) 230*	2017
C/B	NYPA, RG&E, N. Grid	Clay-Pannell (#1) 345*	2017
C/B	NYPA, RG&E, N. Grid	Clay-Pannell (#2) 345*	2017
C	NYSGE	Oakdale 345/115 2TR	2017
C	N. Grid	Clay-Teall (#10) 115 (Clay-Bartell Rd-Pine Grove)*	2017
C	N. Grid	Clay-Dewitt (#3) 115 (Clay-Bartell Rd)*	2017
E	N. Grid	Porter-Yahnundasis (#3) 115 (Port-Kelsey)*	2017
E	N. Grid	Porter-Oneida (#7) 115 (Power-W. Utica)*	2017
K	LIPA	East Garden City-Valley Stream (#262) 138	2017
C	N. Grid	Elbridge 345/115 1TR*	2022
C	N. Grid	Clay-Woodard (#17) 115 (Clay-Euclid)*	2022
C	N. Grid	Clay-Lockheed Martin (#14) 115 (Clay-Wetzel)*	2025

\* Violations removed with the TO updates

#### 5.2.1.4. Transmission Security Compensatory MW

To provide information to the marketplace regarding the magnitude of the resources that are required to meet the BPTF transmission security needs, **Table 5-4** contains a summary of the minimum compensatory MW to satisfy the transmission security violations identified in **Section 5.2.1**. The compensatory MW identified in **Table 5-4** are for illustrative purposes only and are not meant to limit the specific facilities or types of resources that may be offered as solutions to Reliability Needs. Compensatory MW may reflect modifications to contractual power flow schedules or generation capacity (MVA), demand response, or transmission additions.

**Table 5-4: Minimum Compensatory MW Additions for Transmission Security Violations**

Zone	Owner	Monitored Element	2017 MVA Overload	2017 Min. Comp. MW	2021 MVA Overload	2021 Min. Comp. MW	2026 MVA Overload	2026 Min. Comp. MW
C	NYSEG	Oakdale 345/115 2TR	10	16	15	25	40	66
K	LI	East Garden City-Valley Stream (#262) 138	15	18	20	24	44	53

#### 5.2.2. Short Circuit Assessment

Performance of a transmission security assessment includes the calculation of symmetrical short circuit current to ascertain whether the circuit breakers in the

system could be subject to fault current levels in excess of their rated interrupting capability. The analysis was performed for the year 2021, reflecting the study conditions outlined in **Section 4**. The calculated fault levels would be constant over the second five years of the Study Period as no new generation or transmission is modeled in the RNA for the second five years, and the methodology for fault duty calculation is not sensitive to load growth. No overdutied circuit breakers were identified. The detailed results are presented in **Appendix D** of this report.

### 5.2.3. System Stability Assessment

The 2015 NYISO Comprehensive Area Transmission Review (CATR), which was completed in June 2016 and evaluated the year 2020, is the most recent CATR. Stability analyses were conducted as part of the 2015 CATR in conformance with the applicable NERC standards, NPCC criteria, and NYSRC Reliability Rules. The analyses found no stability issues (criteria violations) for summer peak load and light load conditions. Stability analysis was also performed using the 2015 CATR stability cases to determine any reliability impacts due to the generation retirements. No reliability impacts were found.

### 5.2.4. Transmission and Resource Adequacy Assessment

The NYISO conducts its resource adequacy analysis with GE MARS software package, which performs a probabilistic simulation of outages of capacity and transmission resources. The transmission system in MARS is modeled using interface transfer limits.

The emergency transfer limits were developed using the 2016 RNA power flow base case. **Tables 5-5, 5-6, and 5-7** below provide the thermal and voltage emergency transfer limits for the major NYCA interfaces. For comparison purposes, the 2014 RNA transfer limits are also presented.

**Table 5-5: Transmission System Thermal Emergency Transfer Limits**

Interface	2016 RNA study						2014 RNA study		
	2017	2018	2019	2020	2021	2026	2017	2018	2019
Dysinger East	1700	<i>1700</i>	<i>1700</i>	<i>1700</i>	1700	same as 2021	850 - 2850*	825 - 2825*	800 - 2800*
Central East MARS	4425	<i>4475</i>	<i>4475</i>	<i>4475</i>	4475	same as 2021	4500	4500	4500
E to G (Marcy South)	2150	<i>2275</i>	<i>2275</i>	<i>2275</i>	2275	same as 2021	2150	2150	2150
F to G	3475	<i>3475</i>	<i>3475</i>	<i>3475</i>	3475	same as 2021	3475	3475	3475
UPNY-SENY MARS	5500	<i>5600</i>	<i>5600</i>	<i>5600</i>	5600	same as 2021	5600	5600	5600
I to J	4400	<i>4400</i>	<i>4400</i>	<i>4400</i>	4400	same as 2021	4400	4400	4400
I to K (Y49/Y50)	1190	<i>1190</i>	<i>1190</i>	<i>1190</i>	1190	same as 2021	1290	1290	1290

**Notes:**

\* Dynamic limit table based on status of Huntley and Dunkirk units;

*Grey italic font: Limit was not calculated*

**Table 5-6: Transmission System Voltage Emergency Transfer Limits**

Interface	2016 RNA study						2014 RNA study		
	2017	2018	2019	2020	2021	2026	2017	2018	2019
Dysinger East	2125	<i>2125</i>	<i>2125</i>	<i>2800</i>	2800	Same as 2021	<i>2975</i>	<i>2975</i>	2975
Central East MARS	3050	<i>3050</i>	<i>3050</i>	<i>3050</i>	3050	Same as 2021	3100	3100	3100
Central East Group	4925	<i>4925</i>	<i>4925</i>	<i>4925</i>	4925	Same as 2021	5000	5000	5000
UPNY-ConEd	5600	<i>5750</i>	<i>5750</i>	<i>5750</i>	5750	Same as 2021	5210	5210	5210
I to J & K	5400	<i>5600</i>	<i>5600</i>	<i>5600</i>	5600	Same as 2021	5160	5160	5160

**Note:**

*Grey italic font: Limit was not calculated*

**Table 5-7: Transmission System Base Case Emergency Transfer Limits**

Interface	2016 RNA study										2014 RNA study						
	2017		2018		2019		2020		2021		2026	2017		2018		2019	
Dysinger East	1700	T	<i>1700</i>	T	<i>1700</i>	T	<i>1700</i>	T	1700	T	Same as 2021	850 - 2850*	T	825 - 2825*	T	800 - 2800*	T
Central East MARS	3050	V	<i>3050</i>	V	<i>3050</i>	V	<i>3050</i>	V	3050	V	Same as 2021	3100	V	3100	V	3100	V
Central East Group	4925	V	<i>4925</i>	V	<i>4925</i>	V	<i>4925</i>	V	4925	V	Same as 2021	5000	V	5000	V	5000	V
E to G (Marcy South)	2150	T	<i>2275</i>	T	<i>2275</i>	T	<i>2275</i>	T	2275	T	Same as 2021	2150	T	2150	T	2150	T
F to G	3475	T	<i>3475</i>	T	<i>3475</i>	T	<i>3475</i>	T	3475	T	Same as 2021	3475	T	3475	T	3475	T
UPNY-SENY MARS	5500	T	<i>5600</i>	T	<i>5600</i>	T	<i>5600</i>	T	5600	T	Same as 2021	5600	T	5600	T	5600	T
I to J	4400	T	<i>4400</i>	T	<i>4400</i>	T	<i>4400</i>	T	4400	T	Same as 2021	4400	T	4400	T	4400	T
I to K (Y49/Y50)	1190	T	<i>1190</i>	T	<i>1190</i>	T	<i>1190</i>	T	1190	T	Same as 2021	1290	T	1290	T	1290	T
I to J & K	5400	C	<i>5590</i>	T	<i>5590</i>	T	<i>5590</i>	T	5590	T	Same as 2021	5160	C	5160	C	5160	C

**Notes:**

\* Dynamic limit table based on status of Huntley and Dunkirk units

T - Thermal, V - Voltage, C – Combined

*Limit was not calculated*



The **Dysinger East** limit used in the 2014 RNA was based on dynamic limit tables that reduced the limit when Huntley and Dunkirk units were unavailable. For the 2016 RNA, a single limit is used because the Huntley and Dunkirk units are all modeled as out of service. The increase in the limit from the lowest values is a result of the installation of series reactors on the Packard – Huntley 230 kV circuits, which are the facilities limiting the power transfer.

The Dysinger East voltage limit increases significantly in 2020. This is due to the addition of the Station 255 project in Zone B, which includes two new 345/115 kV transformers and a new 345 kV line section from Station 255 to Station 80. However, this increase in the voltage limit does not impact the MARS topology since the thermal transfer limit is more constraining throughout the Study Period.

The **Central East** MARS and Central East Group interfaces reductions of 50 MW and 75 MW, respectively, result from the proposed retirement of the FitzPatrick unit.

When comparing the **UPNY-SENY** MARS limits for year 2017 to the previous RNA, there is a reduction of 100 MW. This reduction is caused by the change in the modeling of the Con Ed/PSEG wheel schedule. For the 2014 RNA, 1,000 MW was modeled flowing to PJM on the S. Mahwah to Waldwick ties and 1,000 MW to New York was modeled on the A, B, and C ties. In the 2016 RNA, due to the cancellation of the Con Ed/PSEG agreement to wheel that power, 0 MW is modeled on all of these ties. The modeling change resulted in a 100 MW decrease in the UPNY-SENY MARS limit. This limit is then increased to 5,600 MW in the 2016 RNA in year 2018 when the Leeds – Hurley series compensation project goes into service.

The modeling change of the ConEd/PSEG wheel in the 2016 RNA also results in an increase in the **UPNY-ConEd** and the I to J & K interface limits. No longer modeling the 1,000 MW withdrawal of power from Zone G to supply the wheel reduces the reactive power losses in SENY and increases voltage constrained transfer limits in that area. The reduction in load growth and increase in behind-the-meter solar PV installations also impacts these transfer limits. For year 2017, the UPNY-ConEd limit increases by 390 MW and the I to J & K transfer limit increases by 240 MW when compared to the previous RNA. These limits increase again in year 2018 by 150 MW and 200 MW respectively, once CPV Valley Energy Center enters into service as expected.

The **I to K (Y49/Y50)** interface decreased by 100 MW from the previous RNA. This is due to a reduction in the rating of the limiting facility, Shore Road – Glenwood

South 138 kV. LIPA recently concluded an update of the methodology that is used to calculate their facility ratings. The ratings of several bulk facilities were updated accordingly and will be used for the final RNA Base Case.

The topology used in the MARS model for the final RNA Base Case is represented in **Figures 5-2, 5-3 and 5-4** below. The modeled internal transfer limits are the summer emergency ratings derived from the RNA power flow cases. The external transfer limits are developed from the NPCC CP-8 Summer Assessment MARS database with changes based upon the RNA Base Case assumptions.

Figure 5-2: 2016 RNA Final Topology Year 1 (2017)

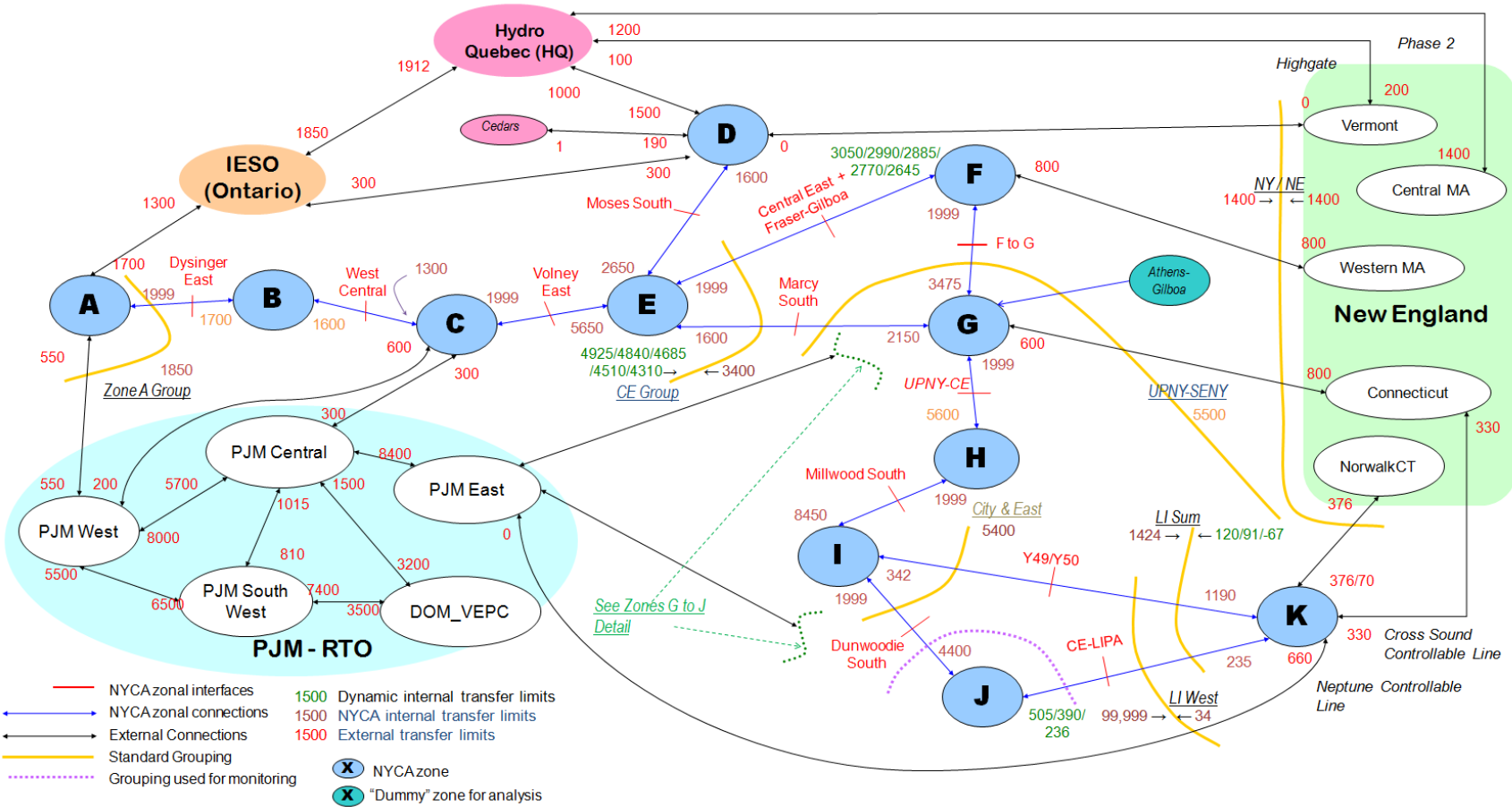


Figure 5-3: 2016 RNA Final Topology Year 2 to 10 (2018-2026)

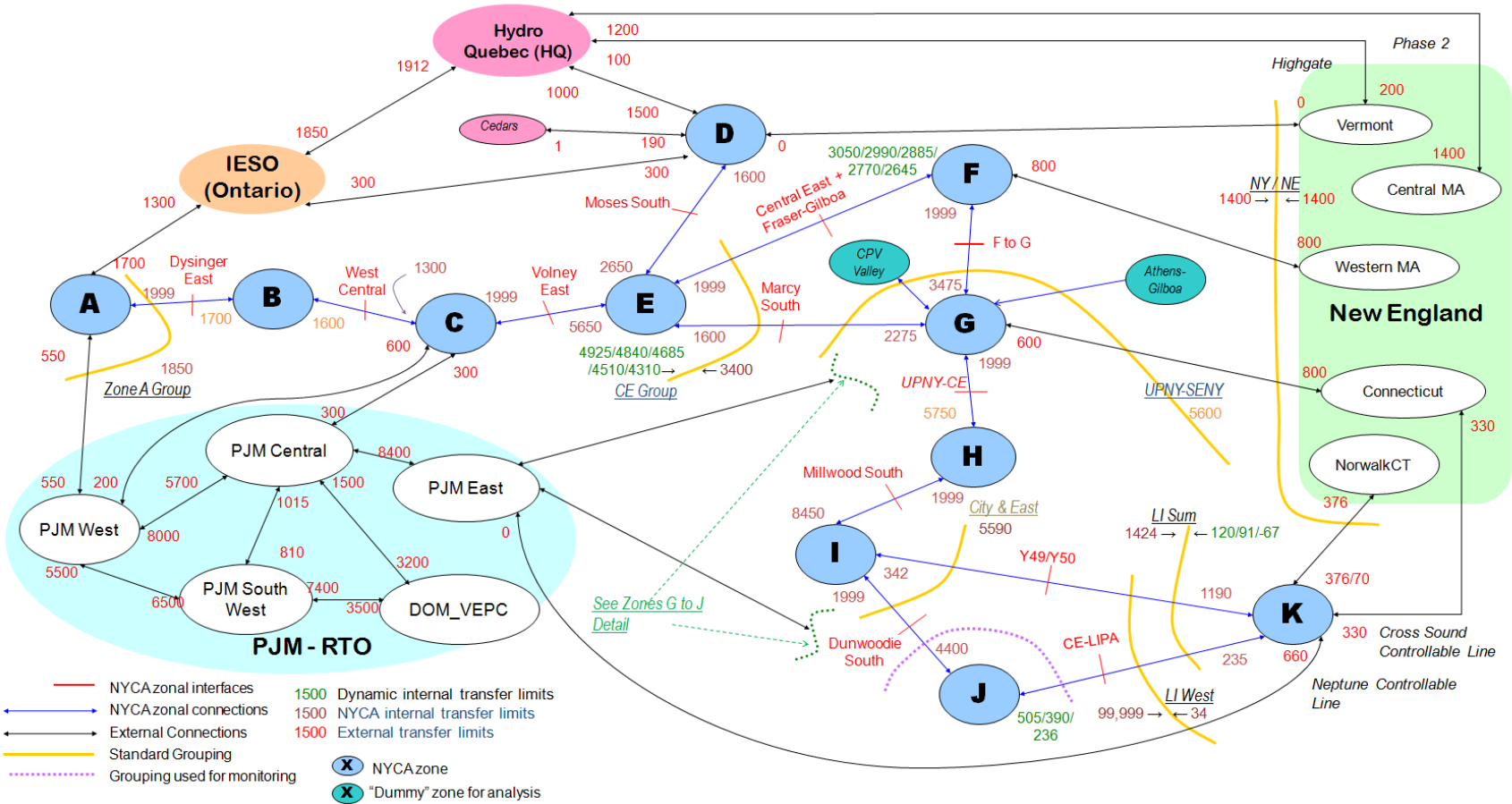
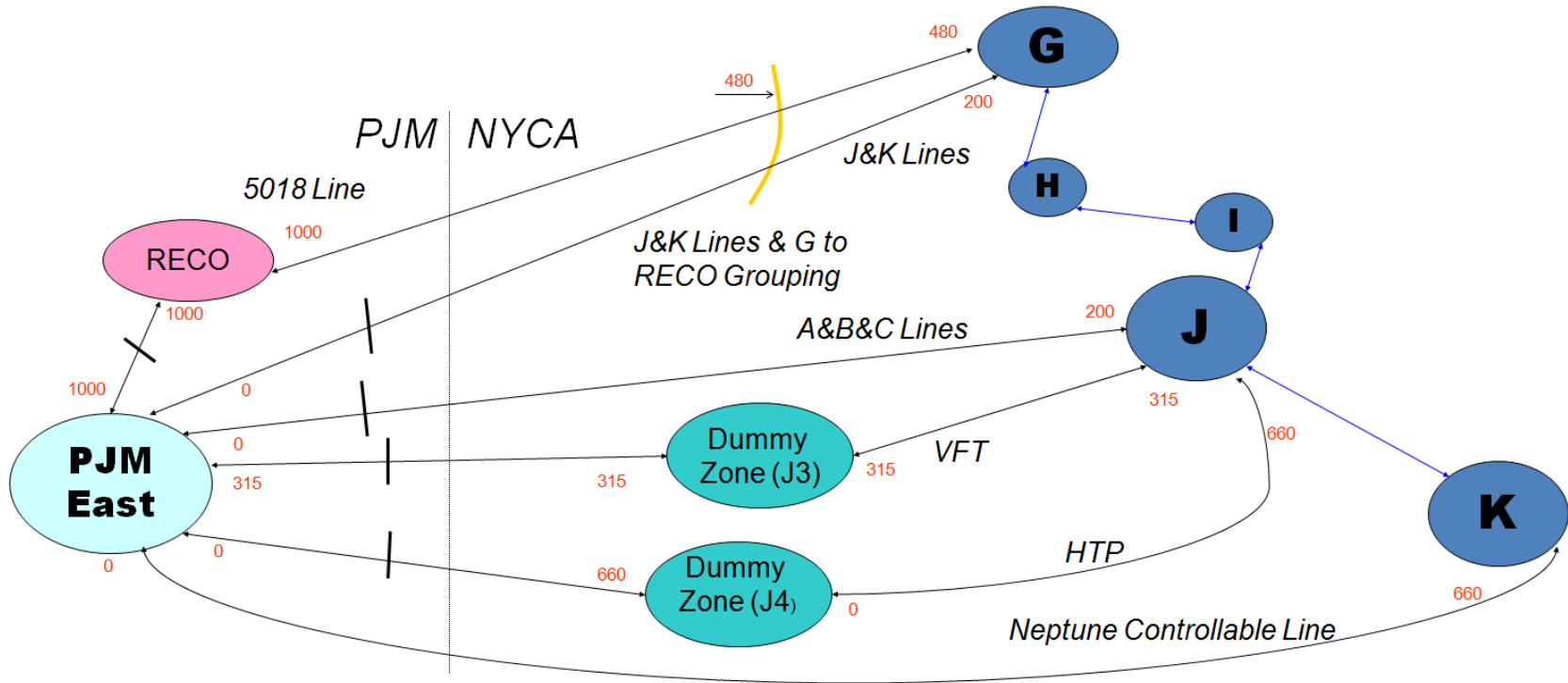


Figure 5-4: 2016 RNA Final Topology Zones G to J, Year 1 to 10 (2017 to 2026)



(PJM East to RECO) + (PJM East to J) + (PJM East to J3) + (PJM East to J4) + (PJM East to G) Grouped Interface Limited to 2,000 MW

The results of the 2016 RNA Base Case resource adequacy studies show that the LOLE for the NYCA does not exceed the criterion of 0.1 days per year throughout the ten-year Study Period. The NYCA LOLE results for both the preliminary and final are presented in **Table 5-8**.

**Table 5-8: NYCA Resource Adequacy Measure (in LOLE)**

Case	2017	2018	2019	2020	2021	2022	2023	2024	2025	2026
Preliminary Base Case	0.04	0.03	0.03	0.02	0.02	0.02	0.03	0.03	0.03	0.04
NYCA Free Flow*	0.04	0.03	0.03	0.02	0.02	0.02	0.03	0.03	0.03	0.04

\*all NYCA internal transfer limits are removed

Case	2017	2018	2019	2020	2021	2022	2023	2024	2025	2026
Preliminary Base Case	0.04	0.03	0.03	0.02	0.02	0.02	0.03	0.03	0.03	0.04
Final Base Case	0.04	0.03	0.04	0.02	0.03	0.03	0.03	0.04	0.04	0.05

The decrease in NYCA LOLE from 2017 to 2018 results from the CPV Valley Energy Center entering into service, while the drop from 2019 to 2020 results from capacity currently sold to New England assumed to be returning to the New York market. The very small difference in the LOLE between the Base Case and free flow case indicates a lack of binding interfaces in NYCA.

## 6. Scenarios

### 6.1. Introduction

---

The NYISO, in conjunction with stakeholders and Market Participants, develops reliability scenarios pursuant to Section 31.2.2.5 of Attachment Y of the OATT. Scenarios are variations on the preliminary RNA Base Case to assess the impact of possible changes in key study assumptions which, if they occurred, could change the timing, location, or degree of violations of Reliability Criteria on the NYCA system during the Study Period. The following scenarios were evaluated as part of the 2016 RNA, with an identification of the type of assessment performed:

- High Load (Econometric) Forecast – Resource Adequacy Only
- Zonal Capacity at Risk – Resource Adequacy Only
- Indian Point Energy Center (IPEC) Retirement assessment – Resource Adequacy Only
- No Coal – Resource Adequacy Only
- No Nuclear – Resource Adequacy Only
- Capacity Currently Sold Forward to External Control Areas will Continue to Sell in Remaining Years of Study Period – Resource Adequacy Only
- Transmission security assessment using a 90/10 load forecast – Transmission Security Only
- Western Public Policy Transmission Needs – Transmission Security Only

### 6.2. Resource Adequacy Scenarios LOLE Results

---

The results of the Resource Adequacy scenarios are summarized in the following sections and also in the **Table 6-3**, below.

#### 6.2.1. High Load (Econometric) Forecast

The RNA Base Case forecast includes impacts associated with projected energy reductions coming from statewide energy efficiency and retail PV programs. The High Load Forecast Scenario excludes these energy efficiency program impacts from the peak forecast, resulting in the econometric forecast levels, and is shown in **Table 4-1**, above, with the delta shown in the **Table 6-1** below. This results in a higher peak load in 2026

than the Base Case forecast by 2,962 MW. Given that the peak load in the econometric forecast is higher than the Base Case, the probability of violating the LOLE criterion increases and violations also occur sooner.

**Table 6-1: High Load vs. Baseline Summer Peak Forecast**

Year	NYCA HighLoad	NYCA Baseline	Delta HighLd-Baseline
2017	34,533	33,363	1,170
2018	34,922	33,404	1,518
2019	35,243	33,477	1,766
2020	35,487	33,501	1,986
2021	35,747	33,555	2,192
2022	36,005	33,650	2,355
2023	36,261	33,748	2,513
2024	36,497	33,833	2,664
2025	36,745	33,926	2,819
2026	37,018	34,056	2,962

### 6.2.2. Zonal Capacity at Risk

The zones-at-risk assessments identify a maximum level of capacity that can be removed without causing NYCA LOLE violations. However, the impacts of removing capacity on the reliability of the transmission system and on transfer capability are highly location dependent. Thus, in reality, lower amounts of capacity removal are likely to result in reliability issues at specific transmission locations. The analysis did not attempt to assess a comprehensive set of potential scenarios that might arise from specific unit retirements. Therefore, actual proposed capacity removal from any of these zones would need to be further studied in light of the specific capacity locations in the transmission network to determine whether any additional violations of reliability criteria would result. Additional transmission security analysis, such as N-1-1 analysis, would need to be performed for any contemplated plant retirement in any zone.

The Base Case LOLE does not exceed the 0.10 criterion over the ten-year Study Period. Scenario analyses were performed to determine the reduction in zonal capacity (*i.e.*, the amount of capacity in each zone that could be lost) which would cause the NYCA LOLE to exceed 0.10 in each year from 2017 through 2026. The NYISO reduced zonal capacity to determine when violations occur in the same manner as the



compensatory MW are added to mitigate resource adequacy violations, but with the opposite impact. The zonal capacity at risk analysis is summarized in **Table 6-2**, below.

**Table 6-2: 2016 RNA Zonal Capacity at Risk (MW)**

Load Zones	2017	2018	2019	2020	2021	2022	2023	2024	2025	2026
Zone A	1,100	850	850	1,100	1,050	1,050	950	950	900	850
Zone B <sup>1</sup>	EZR	EZR	EZR	EZR	EZR	EZR	EZR	EZR	EZR	EZR
Zone C	1,400	1,450	1,450	2,000	1,900	1,800	1,700	1,550	1,500	1,250
Zone D <sup>1</sup>	EZR	EZR	EZR	EZR	EZR	EZR	EZR	EZR	EZR	EZR
Zone E <sup>1</sup>	EZR	EZR	EZR	EZR	EZR	EZR	EZR	EZR	EZR	EZR
Zone F	1,400	1,450	1,450	2,050	1,950	1,850	1,700	1,550	1,500	1,250
Zone G	1,150	1,350	1,300	1,650	1,600	1,500	1,400	1,300	1,250	1,050
Zone H	1,150	1,350	1,300	1,650	1,550	1,550	1,400	1,300	1,250	1,000
Zone I <sup>1</sup>	EZR	EZR	EZR	EZR	EZR	EZR	EZR	EZR	EZR	EZR
Zone J	950	1,050	1,000	1,150	1,150	1,100	1,050	1,000	950	850
Zone K	750	800	800	900	850	800	750	650	600	500

<sup>1</sup> EZR = Exceeds Zonal Resources

Zonal Groups	2017	2018	2019	2020	2021	2022	2023	2024	2025	2026
Zones A-F	1,500	1,500	1,450	2,100	1,950	1,900	1,700	1,550	1,500	1,250
Zones G-I	1,150	1,350	1,300	1,650	1,600	1,550	1,400	1,300	1,250	1,000

### 6.2.3. Indian Point Energy Center Plant Retirement

The second of two nuclear operating licenses for the Indian Point Energy Center (“IPEC”) expired in 2015. Because its owners submitted license renewal applications on a timely basis, IPEC remains in operation during its ongoing license renewal processes. This scenario studied the impacts if the IPEC instead deactivated. Significant violations of resource adequacy criteria would occur immediately in 2017 if the IPEC deactivated at the beginning of 2017.

The IPEC has two base-load units (totaling 2,060 MW) located in Zone H in Southeastern New York, an area of the State that is subject to transmission constraints that limit transfers in that area. Southeastern New York, with the IPEC in service, currently relies on transfers to augment existing capacity. Consequently, load growth or loss of generation capacity in this area would aggravate those constraints.

The transmission security analysis findings for this 2016 RNA were not expected to be materially worse than in previous studies, such as the 2014 RNA. Prior studies demonstrated that the resource adequacy violations were more severe than the transmission security results; therefore, the 2016 RNA performed only a resource adequacy assessment, as shown in **Table 6-3**.

With IPEC out of service, the NYCA LOLE would be 0.21 days per year in 2017. The LOLE violation continues in each year of the Study Period and reaches an LOLE of 0.22 days per year in 2026, which is substantially higher than the 0.1 days per year criteria.

Compared with the 2014 RNA, the resulting LOLE violations are lower, but continue to substantially exceed the LOLE requirement should the Indian Point Plant deactivate.

### 6.2.4. No Coal

This scenario assesses the retirement of the last coal plant in New York State, which would represent the loss of approximately 687 MW of capacity. This scenario caused a relatively small increase in NYCA LOLE as shown in **Table 6-3**.

### 6.2.5. No Nuclear

This scenario assesses the retirement of all of the remaining nuclear plants in New York State (in addition to Ginna and FitzPatrick being modeled as retired in the

Base Case). This scenario resulted in a relatively large increase in LOLE, as shown in **Table 6-3**.

### 6.2.6. Continued Forward Sales to External Control Areas

This assessment was performed with current capacity sales to New England being held constant from 2018 to the end of the Study Period. **Table 6-3** below details the NYCA LOLE results. This assessment does not address the impacts on major transmission interface transfer capabilities caused by the capacity sales to New England.

**Table 6-3: 2016 RNA Resource Adequacy Scenarios NYCA LOLE Results**

Scenario	2017	2018	2019	2020	2021	2022	2023	2024	2025	2026
Base Case	0.04	0.03	0.03	0.02	0.02	0.02	0.03	0.03	0.03	0.04
Capacity Continuing to Sell	0.04	0.03	0.03	0.04	0.04	0.04	0.05	0.05	0.06	0.07
No Coal	0.06	0.07	0.07	0.04	0.05	0.05	0.06	0.06	0.06	0.07
High Load Forecast	0.09	0.10	0.11	0.10	0.12	0.13	0.15	0.17	0.20	0.24
Retirement of IPEC Gen.	0.21	0.14	0.14	0.12	0.13	0.14	0.16	0.17	0.18	0.20
No Nuclear	0.36	0.27	0.27	0.22	0.23	0.24	0.26	0.27	0.29	0.32

## 6.3. Transmission Security Scenario Results

### 6.3.1. 90/10 Load Forecast

The 90/10 peak load forecast represents an extreme weather condition (*e.g.*, hot summer day). **Table 6-4** provides a summary of the 90/10 coincident peak load forecast through the ten-year Study Period compared to the baseline forecast on a year-by-year basis.

**Table 6-4: 90/10 Peak Load Forecast NYCA versus Baseline Forecast (MW)**

	2017	2018	2019	2020	2021	2022	2023	2024	2025	2026
Baseline Peak Load Forecast	33,363	33,404	33,477	33,501	33,555	33,650	33,748	33,833	33,926	34,056

DRAFT – For Discussion Purposes

90/10 Peak Load Forecast	35,708	35,766	35,857	35,892	35,960	36,067	36,180	36,278	36,385	36,532
Difference	2,345	2,362	2,380	2,391	2,405	2,417	2,432	2,445	2,459	2,476

The transmission security violations identified in the preliminary RNA Base Case, occurring primarily in Western and Central New York and Long Island, are exacerbated under 90/10 coincident peak load conditions; also, additional overloaded facilities occur in the same regions. **Table 6-5** provides a summary of the contingency pairs that result in the highest thermal overload on BPTF elements. This table shows that increased load growth across the state exacerbates the violations identified in the preliminary RNA Base Case. In the second contingency column, “N/A” corresponds to a violation occurring under N-1 conditions and “Base Case” corresponds to a violation under an N-1-0 conditions.

**Table 6-5: 2016 RNA 90/10 Transmission Security Thermal Violations**

Zone	Owner	Monitored Element	Normal Rating (MVA)	LTE Rating (MVA)	STE Rating (MVA)	2017 Flow (MVA)	2021 Flow (MVA)	2026 Flow (MVA)	First Contingency	Second Contingency
A/ONT	N.Grid	Packard-Beck (BP76) 230	489	587	587	608	590	590	Niagara-Packard (#62) 230	TWR Niagara 230
A	NYSEG	Stolle-Gardenville (#66) 230	474	478	478	485	487	491	TWR Huntley 230	N/A
A	N. Grid	Packard-Huntley (#77) 230	556	644	746	569	565	569	Packard-Huntley (#77) 230	SB Packard 230
A	N. Grid	Packard-Huntley (#77) 230	556	644	746			649	SB Packard 230	N/A
A	N. Grid	Packard-Huntley (#78) 230	556	644	746	740	719	731	Stolle-Gardenville (#66) 230	SB Packard 230
A	N. Grid	Packard-Huntley (#78) 230	556	644	746	605	583	594	Packard-Huntley (#78) 230	Base Case
A	N. Grid	Packard-Huntley (#77) 230	556	644	746	738	714	726	Packard-Huntley (#77) 230	Bus Fault Stolle 230
A	N. Grid	Packard-Huntley (#77) 230	556	644	746	606	583	597	Packard-Huntley (#77) 230	Base Case
A	N.Grid	Niagara-Packard (#61) 230	627	717	847	877	859	877	Stolle-Gardenville (#66) 230	TWR Packard 230
A	N.Grid	Niagara-Packard (#61) 230	627	717	847			628	Niagara-Packard (#62) 230	Base Case
A	N.Grid	Niagara-Packard (#62) 230	627	717	847			855	TWR Niagara 230	N/A
A	N.Grid	Niagara-Packard (#62) 230	627	717	847	917	915	946	Beck-Packard (BP76) 230	TWR Niagara 230
C/B	NYPA, RG&E, N. Grid	Clay-Pannell (#1) 345	1195	1195	1195	1450	1365	1431	Robinson-Stolle (#65) 230	SB Clay 345
C/B	NYPA, RG&E, N. Grid	Clay-Pannell (#2) 345	1195	1195	1195	1452	1367	1433	Robinson-Stolle (#65) 230	SB Clay 345
C	NYSGE	Oakdale 345/115 2TR	428	556	600	661	672	708	Fraser 345/115 TR2	SB Oakdale 345
C	NYSGE	Oakdale 345/115 2TR	428	556	600	441	432	455	Oakdale 345/115 3TR	Base Case
C	NYSGE	Oakdale 345/115 3TR	428	556	600	577	572	592	SB Oakdale 345	N/A
C	NYSGE	Oakdale 345/115 3TR	428	556	600	602	608	630	Watercure-Oakdale (#31) 345	Oakdale 345/115 2TR
C	NYSGE	Oakdale 345/115 3TR	428	556	600			445	Oakdale 345/115 2TR	Base Case
C	NYSGE	Hillside 230/115 BK3	231	294	336	304	316	328	Robinson-Stolle (#66) 230	Bus Fault Hillside 230
C	NYSGE	Hillside 230/115 BK3	231	294	336	243	255	256	Hillside 230/115 BK4	Base Case
C	N. Grid	Elbridge 345/115 1TR	470	557	717			559	SB Lafayette 345	N/A
C	N. Grid	Elbridge 345/115 1TR	470	557	717	570	658	675	Clay-Pannell (PC-1)345	SB Clay 345

							497	486	Packard-Huntley (#77) 230	Base Case
C	N. Grid	Clay-Woodard (#17) 115 (Clay-Euclid)	220	252	280	286	275	293	Clay-Lockheed Martin (#14)	SB Lafayette 345
						281	322	339	Oakdale-Fraser (#32) 345	SB Lafayette 345
C	N. Grid	Clay-Lockheed Martin (#14) 115 (Clay-Wetzel)	220	252	280		283	298	Oakdale-Fraser (#32) 345	SB Lafayette 345
						266	261	272	Clay-Woodard (#17) 115	SB Oswego 345
C	N. Grid	Clay-Teall (#10) 115 (Clay-Bartell Rd-Pine Grove)	116	120	145	137			Clay-Teall (#11) 115	SB Dewitt 345
C	N. Grid	Clay-Dewitt (#3) 115 (Clay-Bartell Rd)	116	120	145	137			Clay-Dewitt (#13) 345	SB Oswego 345
C	N. Grid	Lighthouse Hill-Clay (#7) 115	108	108	108			113	Clay 345/115 2TR	SB Clay 345
E	NYPA	Fraser 345/115 BK2	305	386	420	438	437	441	Lafayette-Clarks Corners (4-46) 345	SB Fraser 345
						420	456	471	Oakdale-Fraser (#32) 345	SB Lafayette 345
E	N. Grid	Porter-Yahundasis (#3) 115 (Port-Kelsey)	116	120	145	142			Bus Fault Porter 115	N/A
						159	126	126	Oswego-Elbridge-Lafayette (#17) 345	Bus Fault Porter 115
						151	131	156	Dewitt 345/115 TR2	Bus Fault Porter 115
						130			Porter-Oneida (#7) 115	Base Case
E	N. Grid	Porter-Oneida (#7) 115 (Power-W. Utica)	116	120	145	143	130		Porter-Yahundasis (#3) 115	SB Oswego 345
						132	133	132	Oakdale-Fraser (#32) 345	SB Lafayette 345
K	LIPA	Shore Rd-Lake Success (#367) 138	249	430	612		440	436	Barrett-Valley Stream (#291) 138	Shore Rd-Lake Success (#368) 138
K	LIPA	Shore Rd-Lake Success (#368) 138	249	430	612		441	437	Barrett-Valley Stream (#291) 138	Shore Rd-Lake Success (#367) 138
K	LIPA	East Garden City-Valley Stream (#262) 138	211	291	504	337	336	352	Barrett-Valley Stream (#292) 138	Barrett-Valley Stream (#291) 138

### 6.3.2. Western New York Public Policy Transmission Need

On July 20, 2015, the New York State Public Service Commission (PSC) issued an order identifying the relief of congestion in Western New York, including access to increased output from the Niagara hydroelectric facility and additional imports of renewable energy from Ontario, as a Public Policy Transmission Need for which the NYISO must solicit and evaluate proposed solutions. For this Western New York Public Policy Transmission Need, a sufficient project must obtain full output from Niagara, while reliably maintaining certain levels of simultaneous imports from Ontario. On November 1, 2015, the NYISO issued a solicitation for proposed solutions of all types (transmission, generation, and demand side) and received 15 proposals from a total of eight developers—12 transmission-only proposals, one hybrid transmission and generation proposal, and two generation-only proposals. On May 31, 2016, the NYISO

issued the Western New York Public Policy Transmission Need Viability & Sufficiency Assessment, identifying 10 viable and sufficient projects to address the public policy need and also recommending certain non-bulk transmission facility upgrades to fulfill the objectives of the public policy. The PSC has received public comments and will issue an order regarding whether there continues to be a need for transmission driven by public policy requirements such that the NYISO should evaluate and select a transmission solution.

To evaluate the effects of a potential Western New York Public Policy Transmission Project on the transmission security findings for this RNA, the transmission constraints in the Niagara area were relaxed in the preliminary RNA Base Case for study years 2021 and 2026. As shown in **Table 6-6**, a Western New York Public Policy Transmission Need project would resolve the overloads on Stolle-Gardenville (#66) 230 kV, Packard-Huntley (#77) 230 kV, Clay-Pannell (#1) 345 kV, Clay-Pannell (#2) 345 kV, and Oakdale (2TR) 345/115 kV.

**Table 6-6: 2016 RNA Transmission Security Thermal Violations for Western Public Policy**

Zone	Owner	Monitored Element	Normal Rating (MVA)	LTE Rating (MVA)	STE Rating (MVA)	2017 Flow (MVA)	2021 Flow (MVA)	2026 Flow (MVA)	First Contingency	Second Contingency
A	NYSEG	Stolle-Gardenville (#66) 230	474	478	478	N/A			Packard-Gardenville (#182) 115	TWR Packard-Huntley 230
A	N. Grid	Packard-Huntley (#77) 230	556	644	746	N/A			Stolle-Gardenville (#66) 230	SB Packard 230
C/B	NYPA, RG&E, N. Grid	Clay-Pannell (#1) 345	1195	1195	1195	N/A			Stolle-Gardenville (#66) 230	SB Clay 345
C/B	NYPA, RG&E, N. Grid	Clay-Pannell (#2) 345	1195	1195	1195	N/A			Stolle-Gardenville (#66) 230	SB Clay 345
C	NYSGE	Oakdale 345/115 2TR	428	556	600	N/A			Packard-Huntley (#77) 230	SB Oakdale 345
C	N. Grid	Elbridge 345/115 1TR	470	557	717	N/A		569	Pannell-Clay (#1) 345	SB Clay 345
C	N. Grid	Clay-Lockheed Martin (#14) 115 (Clay-Wetzel)	220	252	280	N/A		255	Clay-Woodard (#17) 115	SB Lafayette 345
C	N. Grid	Clay-Woodard (#17) 115 (Clay-Euclid)	220	252	280	N/A		255	Clay-Lockheed Martin (#14) 115	SB Lafayette 345
C	N. Grid	Clay-Teall (#10) 115 (Clay-Bartell Rd-Pine Grove)	116 220	120 252	145 280	N/A			Clay-Teall (#11) 115	SB Dewitt 345
C	N. Grid	Clay-Dewitt (#3) 115 (Clay-Bartell Rd)	116 220	120 252	145 280	N/A			Clay-Dewitt (#13) 345	Oswego-Lafayette (#17) 345
E	N. Grid	Porter-Yahnundasis (#3) 115 (Port-Kelsey)	116	120	145	N/A			Stolle-Gardenville (#66) 230	Porter Bus D 115
E	N. Grid	Porter-Oneida (#7) 115 (Power-W. Utica)	116	120	145	N/A			Porter-Yahnundasis (#3) 115	SB Oswego 345
K	LIPA	East Garden City-Valley Stream (#262) 138	211	291	504	N/A	302	316	Barrett-Valley Stream (#292) 138	Barrett-Valley Stream (#291) 138

## 7. Impacts of Environmental Regulations

### 7.1. Regulations Reviewed for Impacts on NYCA Generators

---

There are several environmental regulatory programs that could impact the operation of the BPTF. These state and federal regulatory initiatives cumulatively may require considerable investment by the owners of New York’s existing thermal power plants in order to comply. If the owners of those plants have to make considerable investments, the cost of the investments could impact whether they remain in the NYISO’s markets and potentially affect the reliability of the BPTF. The purpose of this section is to review the status of the environmental regulatory programs, so that the risks can be properly represented and balanced in the context of the Resource Adequacy and Transmission Security analysis and results contained in this report. The following environmental regulatory programs are reviewed in the 2016 RNA:

- a) *MATS*: Mercury and Air Toxics Standard for hazardous air pollutants (effective April 2015)
- b) *CSAPR*: Cross-State Air Pollution Rule for the reduction of SO<sub>2</sub> and NO<sub>x</sub> emissions in 28 Eastern States (Additional Phase 2 reductions proposed for 2017)
- c) *RGGI*: Regional Greenhouse Gas Initiative 2016 Program Review is currently underway (CO<sub>2</sub> emission cap reductions beyond the existing program are currently being evaluated)
- d) *Clean Power Plan*: New Source Performance Standards would have become effective October 2015 with final emissions limits for existing units beginning in 2022. However, the Supreme Court of the United States stayed the effectiveness of the CPP pending resolution of judicial challenges to the regulation.
- e) *RICE*: NSPS and NESHAP – New Source Performance Standards and National Emission Standards for Hazardous Air Pollutants for Reciprocating Internal Combustion Engines
- f) *DG Rule*: New York State Department of Environmental Conservation (NYSDEC) proposed rule to lower emissions from small generators (potentially effective in 2018)
- g) *NYC Residual Oil Elimination*: Phase out of residual oil usage in New York City (NYC) utility boilers

h) *BTA: Best Technology Available for cooling water intake structures (effective upon Permit Renewal)*

The NYISO has estimated that as much as 27,500 MW in the existing fleet (72% of 2015 Summer Capacity) will have some level of exposure to the above-referenced environmental regulations.

#### **7.1.1. Mercury and Air Toxics Standards (MATS)**

The United States Environmental Protection Agency (EPA) Mercury and Air Toxics Standards (MATS) will limit emissions of mercury and air toxics through the use of Maximum Achievable Control Technology (MACT) for Hazardous Air Pollutants (HAP) from coal and oil fueled steam generators with a nameplate capacity of 25 MW or more. MATS directly affects three coal-fired units in the NYCA, representing 978 MW of nameplate capacity. Compliance requirements began in April 2015, but Reliability Critical Units (RCU) can apply for an extension through April 2017. One coal-fired unit in New York applied for an extension of the compliance deadline to April 2017. The remainder of the New York coal fleet installed emission control equipment and achieved compliance by April 2015.

The heavy oil-fired units have implemented a compliance strategy that relies on cleaner mix of fuels. Given the current outlook for the continued attractiveness of natural gas compared to heavy oil, it is anticipated that compliance can be achieved by dual fuel units through the use of natural gas to maintain fuel ratios that are specified in the regulation. *Note:* The MATS regulation provides for an exemption for units that use oil for less than ten percent of heat input annually over a three year period, and less than 15 percent in any given year. The regulation provides for an exemption from emission limits for units that limit oil use to less than the amount equivalent to an eight percent capacity factor over a two year period.



### 7.1.2. Cross-State Air Pollution Rule (CSAPR)

The CSAPR established emission caps and an allowance trading system to limit SO<sub>2</sub> and NO<sub>x</sub> emissions from fossil fuel fired EGUs for units with 25 MW of nameplate capacity or more. Affected generators need one allowance for each ton emitted for SO<sub>2</sub> and NO<sub>x</sub> in a year and NO<sub>x</sub> during the Ozone Season (OS NO<sub>x</sub>). *Note:* The Ozone Season is May 1 to September 30.

The EPA has established a budget for each type of allowance for each affected state. The rule restricts interstate trading of allowances by establishing trading limits for each allowance system, which are 118%, 118%, and 121% of the respective (SO<sub>2</sub>, NO<sub>x</sub> and OS NO<sub>x</sub>) state budgets. If the allowance trading limit is exceeded, those generators that exceeded their respective contributions to the budget will need to match their emissions in excess of the budget amounts with three allowances for each ton emitted.

In New York, CSAPR affects 157 units, representing 23,100 MW of nameplate capacity. The Supreme Court of the United States upheld the CSAPR regulation and the EPA made the rule effective January 1, 2015. Since the rule was finalized in 2012, two National Ambient Air Quality Standards for SO<sub>2</sub> and Ozone have been promulgated. The EPA has recognized these new standards, unit retirements, and/or changes in load and fuel forecasts in an updated proposal to reduce the Ozone Season NO<sub>x</sub> Budget for New York by 58% beginning in 2017. Similarly, proposed budgets in New Jersey and Pennsylvania were significantly reduced by 77% and 74%, respectively. The structure of this rule creates uncertainty in the cost of production; however, it is expected that there will be a sufficient supply of allowances available in other affected states to allow compliance. The final CSPAR Update Rule is scheduled for release in the fall of 2016, and the NYISO will continue to study its impact on the reliability of the electric system.

### 7.1.3. Regional Greenhouse Gas Initiative (RGGI)

The Regional Greenhouse Gas Initiative (RGGI) is a multi-state, market-based power sector initiative that established a cap on CO<sub>2</sub> emissions from most fossil fueled units of 25 MW or more beginning in 2009. Under RGGI, one allowance is required for each ton of CO<sub>2</sub> emitted during a three-year compliance period. Phase II of the RGGI program became effective January 1, 2014 and further reduced the CO<sub>2</sub> emission cap by 45% to 91,000,000 tons for 2014. Phase II applied annual emission cap reductions of 2.5% per year with a cap of 78,175,215 tons by 2020. The actual quantity of allowances available for auction was further reduced to 56,283,807 tons to account for the carry

forward allowance bank from the first phase of the program. After 2020, the emission cap reductions will be based upon the ongoing 2016 RGGI program review.

Under RGGI, a key provision to keep the allowance and electricity markets functioning is the provision of a Cost Containment Reserve (CCR). If demand exceeds supply at predetermined trigger prices, an additional 10,000,000 allowances will be added to the market. Trigger prices are set to rise to \$10/ton in 2017 and escalate at 2.5% annually thereafter. Trigger prices were exceeded in 2014 and 2015. With the current bank of allowances held in reserve, the planned scheduled auctions, and the availability of the CCR allowances, it appears that the current program design will not negatively impact electric system reliability as long as the existing fleet of non-emitting units is not significantly reduced.

Leading up to the 2016 RNA, there have been several announcements of pending retirements of non-emitting nuclear generating stations within the RGGI region. The loss of these facilities will lead to significant increases in CO<sub>2</sub> emissions and will quickly erode the current bank of allowances.

The RGGI states are currently engaged in a Program Review looking beyond 2020 with a special focus on identifying program changes that may be necessary to make RGGI compatible with the EPA's Clean Power Plan (CPP). The RGGI states are considering changes in the cap, the rate of change of the cap, and the use of the CCR, as well as the criteria for expanded trading of allowances with other states.

#### **7.1.4. Clean Power Plan**

The EPA promulgated regulations to limit CO<sub>2</sub> emissions from existing power plants greater than 25 MW starting in 2022. The rule seeks to reduce national power sector CO<sub>2</sub> emissions by 32% compared to the baseline year of 2005. The rule provides several approaches among which states can choose to design their State Plans. Specifically, states can choose to include new units, mass caps, technology-based emission rates standards, state emission rates, or state specific plans. Recently, in February 2016, the Supreme Court of the United States stayed the implementation of the CPP, which effectively put on hold all further compliance obligations on the states. In May 2016, the Circuit Court of Appeals of the District of Columbia announced that it will hear the appeal of EPA's CPP final rule in September 2016. The New York State Department of Environmental Conservation has indicated that it will continue to formulate a state implementation plan notwithstanding the stay of the rule. The RGGI

states have expressed the intent to only examine mass based compliance with the CPP. While this approach may ultimately provide a reliable system, an analysis of rate based approaches may show reduced reliability risks with an expanded portfolio of options for responding to the loss of non-emitting resources or important transmission facilities. The NYISO will continue to perform analyses of the CPP's impact on reliability as the rule undergoes judicial review.

#### **7.1.5. RICE: NSPS and NESHAP**

In January 2013, the EPA finalized two new rules that apply to engine powered generators typically used as emergency generators. The new rules were designed to allow older emergency generators that do not meet the EPA's rules and emission limits to comply. The first rule allowed generators to operate in demand response programs by limiting operations in non-emergency events to less than 100 hours per year when (i) a North American Electric Reliability Corporation (NERC) Alert Level 2 is declared or (ii) an electric system incurs a voltage or frequency deviation of five percent (5%) or more below the standard voltage or frequency. However, on March 1, 2015, the DC District Court struck this provision. Subsequently, the EPA finalized National Emission Standards for Hazardous Air Pollutants (NESHAP), and New Source Performance Standards (NSPS), for Reciprocating Internal Combustion Engines (RICE). The final rule does not contain the proposed exemptions for older higher emitting generators.

To participate in the demand response programs, emergency generators in New York State are required to have a NYSDEC Title V permit if located at a Major Source, a NYSDEC State Facilities Permit if located at an Area Source, or otherwise a NYSDEC registration. Each of these permits or registrations will have its unique set of limitations.

Some of the affected generators also participate in the NYISO's Special Case Resource (SCR) or Emergency Day-ahead Response (EDRP) Programs, which adds risks to the system reliability if the operations of these generators are constrained by the emission regulations.

#### **7.1.6. Proposed NYSDEC Part 222 DG Rule**

The NYSDEC proposed Part 222 rules to control emissions of NO<sub>x</sub> and particulate matter (PM<sub>10</sub> and 2.5) from engine driven generators that participate in the demand response programs. The proposed rules will apply to all such generators above 150 kW in New York City and above 300 kW in the remainder of the State not already covered by a Title V Permit containing stricter NO<sub>x</sub> and PM limits. Depending on their specific

types, it appears that engines purchased since 2005 and 2006 should be able to operate within the proposed limits. Older engines can be retrofitted with emission control packages, replaced with newer engines, or cease participation in the demand response programs. The proposed rule is generally comparable to rules already in place in a number of other states within the Ozone Transport Region. NYSDEC's estimated compliance schedule is still developing but currently contemplates compliance in mid-2018. Based on the survey of demand response providers, the NYISO estimates that 100-200 MW of demand response program resources may be impacted by this proposed rule.

#### 7.1.7. NYC Residual Oil Elimination

NYC has undertaken a program to eliminate the use of residual fuel oil in Electric Generating Units (EGUs). The program will become effective in 2020. Approximately 3,100 MW of affected generators will need to switch to #2 or #4 fuel oil when oil burning is required to comply with NYSRC Loss of Gas rules. The switch will increase production costs; however, the supplies of #2 fuel oil for direct use or for blending to produce #4 are more widely available.

#### 7.1.8. Best Technology Available (BTA)

The EPA proposed a new Clean Water Act Section 316 b rule providing standards for the design and operation of power plant cooling systems. This rule will be implemented by NYSDEC, which has finalized a policy for the implementation of the Best Technology Available (BTA) for plant cooling water intake structures. This policy is activated upon renewal of a plant's water withdrawal and discharge permit. Based upon a review of current information available from NYSDEC, the NYISO has estimated that approximately 4,300 MW of nameplate capacity could be required to undertake major system retrofits, including closed cycle cooling systems. One high profile application of this policy is the Indian Point nuclear power plant, for which water discharge permit and water quality certification under the Clean Water Act remain pending at the NYSDEC. **Table 7-1** shows the current status of for BTA determinations.

**Table 7-1: NYSDEC BTA Determinations (as of July 2016)**

<b>Plant</b>	<b>Status</b>
Arthur Kill	BTA in place
Astoria	BTA in place
Barrett	Permit drafting underway with equipment enhancements
Bowline	BTA in place, 15% Cap. Factor
Brooklyn Navy Yard	BTA Decision made, installing upgrades
Cayuga	BTA Decision made, install screens
East River	BTA in place
FitzPatrick	BTA studies being evaluated
Ginna	BTA studies being evaluated
Indian Point	Hearings, BTA Decision 2018 at the earliest
Nine Mile Pt 1	BTA studies being evaluated
Northport	BTA determination made, permit issued, equipment upgrades underway
Oswego	Lower priority for NYSDEC, leaning towards 15% Cap. Factor
Port Jefferson	BTA in place
Ravenswood	BTA in place
Roseton	In hearings
Somerset	BTA equipment upgrades identified.

The owners of Bowline have accepted a limit on the duration of operation of the plant as their compliance method. NYSDEC’s BTA Policy allows units to operate with 15% capacity factor averaged over a five-year period, provided that impingement goals are met and the plant is operated in a manner that minimizes entrainment of aquatic organisms.

**7.2. Summary of Environmental Regulation Impacts**

**Table 7-2** summarizes the impact of the new environmental regulations. Approximately 32,400 MW of nameplate capacity may be affected to some extent by these regulations.

**Table 7-2: Impact of New Environmental Regulations**

Program	Status	Compliance Deadline	Approximate Nameplate Capacity (MW)
MATS	In effect	April 2015/2016/2017	1,000
CSAPR	In effect	January 2015 and 2017	23,100
RGGI	In effect	In effect	23,200
NYC #6 Elimination	In Permitting	2020	3,100
BTA	In effect	Upon permit Renewal	4,300

Using publicly available information from the EPA and the U.S. Energy Information Agency, the NYISO further identified potential operational impacts from the environmental regulations.

- *MATS/MRP Program*: Given the current outlook for the continued attractiveness of natural gas compared to heavy oil, it is anticipated that compliance can be achieved by dual fuel units through the use of natural gas to maintain fuel ratios that are specified in the regulation.
- *RGGI*: The impact of RGGI may increase the operating cost of fossil fueled units.

## **8. Fuel Adequacy**

### **8.1. Gas Infrastructure Adequacy Assessment**

---

High volumes of low-cost natural gas continues to be produced in the Marcellus and Utica Shale areas and remains the least costly fuel source for generation in the New York electric markets. As a result, the amount of electrical energy produced by natural gas continues to increase. The benefits of this shift in the relative costs of fossil fuels include reduced emissions from displaced coal and oil, improved generation efficiency, and lower electric energy prices. The trend, however, results in a higher reliance on gas pipelines and a reduction in overall fuel diversity in New York as other generation resources become uneconomic. The 2014 Regional EIPC Study findings for study year 2018 reported that there is inadequate gas pipeline infrastructure to meet all gas-fired generation needs during cold weather operations but that electric reliability can be met with the current levels of dual-fuel capability.

Every fall, the NYISO issues a seasonal fuel adequacy survey to Generation Asset Owners requesting expected dual-fuel capability, the level of gas transportation service, starting alternative fuel inventories, and arrangements for alternative fuel replenishments. The NYISO also independently tracks the permitting status of generating units to confirm dual-fuel capability. Based on these data sources, the 2016 Gold Book reported dual-fuel capability of 18,211 MW (Summer DMNC) and oil-only capability of 2,578 MW (Summer DMNC). Thus, the summer capability of oil and dual-fuel units with oil permits totals 20,789 MW. These oil and dual-fuel facilities represent a fleet of resources that can respond to delivery disruptions on the gas pipeline system during both summer and winter seasons.

### **8.2. Loss of Gas Supply Assessment**

---

A loss of gas supply assessment was conducted as part of the NYISO 2015 Comprehensive Area Transmission Review (CATR). The findings of the assessment are summarized below.

Natural gas-fired generation in NYCA is supplied by various networks of major gas pipelines. NYCA generation capacity has a balance of fuel mix which provides operational flexibility and reliability, and several generation plants have dual fuel capability. Based on the 2015 Gold Book, 10% of the generating capacity is

fueled by natural gas only, 46% by oil and natural gas, and the remainder is fueled by oil, coal, nuclear, hydro, wind, and other.

The loss of gas supply assessment was performed using the winter 2020 baseline (50/50) forecast of the coincident peak load. The study model for a gas fuel shortage uses the winter peak demand level assuming that all NYCA gas-only units, dual-fuel units that lack permits to burn oil, and other units that do not have the capability to burn their alternative fuel (such as those that do not store any in their tanks) are not available. The total reduction in generating capacity is 10,003 MW. **Table 8-1** provides a summary of the winter peak load and total capacity assuming the loss of gas supply.

**Table 8-1: Loss of Gas Supply Winter Peak Load and Capacity Minus Gas Units**

	Comprehensive Review: 2015 Forecast for Winter 2020
Peak Load (MW)	24,575
Total Capacity (MW)	44,748
Loss of Gas Supply Capacity (MW)	10,003
Total Remaining Capacity (MW)	34,745

The steady state analysis shows no thermal or voltage violations for this scenario. For the dynamic analysis, all contingencies evaluated are stable and damped.

### 8.3. Summary of Other Ongoing NYISO efforts

---

The NYISO has been working with stakeholders and other industry groups to identify and address gas-electric coordination issues and improvements. These groups include the NYISO Electric Gas Coordination Working Group (EGCWG), the Northeast Gas-Electric Operating Committee, and the IRC Gas-Electric Task Force. Recent coordination improvements include:

**Operator Awareness**

- Northeast interstate pipeline system in the NYISO Control Room with enhanced posting of gas Operational Flow Orders
- Web based fuel inventory application

**Coordination**

- Continued quarterly infrastructure maintenance coordination
- Market Mitigation & Analysis generation site visits
- New York State Reliability Council Minimum Oil Burn Rules



DRAFT – For Discussion Purposes

- FERC Order 809 electric and gas nomination timing coordination
- FERC Order 787 Code of Conduct communication enhancements
- Improvements in reference level developments reflective of actual fuel costs
- Increased market reserve requirements and enhanced shortage pricing

## 9. Historic Congestion

Appendix A of Attachment Y of the OATT states: “As part of its CSPP, the ISO will prepare summaries and detailed analysis of historic and projected congestion across the NYS Transmission System. This will include analysis to identify the significant causes of historic congestion in an effort to help Market Participants and other interested parties distinguish persistent and addressable congestion from congestion that results from onetime events or transient adjustments in operating procedures that may or may not recur. This information will assist Market Participants and other stakeholders to make appropriately informed decisions.”

The detailed analysis of historic congestion can be found on the NYISO website:  
[http://www.nyiso.com/public/markets\\_operations/services/planning/documents/index.jsp](http://www.nyiso.com/public/markets_operations/services/planning/documents/index.jsp)

## 10. Observations and Recommendations

This 2016 Reliability Needs Assessment (RNA) assesses both the transmission and resource adequacy and the transmission security of the New York Control Area (NYCA) bulk power transmission system from year 2017 through 2026, the “Study Period” of this RNA.

This 2016 Reliability Needs Assessment finds two transmission security related Reliability Needs in portions of the Bulk Power Transmission Facilities (BPTF) beginning in 2017:

- the New York State Electric & Gas Corp. (NYSEG) Oakdale 345/115 kV transformer, and
- the Long Island Lighting Company d/b/a Long Island Power Authority (LIPA) East Garden City to Valley Stream 138 kV line.

This 2016 Reliability Needs Assessment finds that resource adequacy criteria is met throughout the Study Period.

From the transmission and resource adequacy perspective, the New York Control Area is within the Loss of Load Expectation (LOLE) criterion (1 day in 10 years, or 0.1 events per year) throughout the ten-year Study Period. This is mainly attributable to the decrease in the summer peak baseline load forecast of approximately 2,300 MW in 2021 as compared with the 2014 Reliability Needs Assessment. When recent and planned capacity deactivations are included in the calculation, the net statewide surplus increased by approximately 3,000 MW as compared with the 2014 Reliability Needs Assessment and about 975 MW as compared with the 2014 Comprehensive Reliability Plan (see **Table E-1**).

The 2016 Reliability Needs Assessment has identified two transmission security related Reliability Needs in portions of the Bulk Power Transmission Facilities. Specifically, **Table E-2** and **Figure E-1** show that the identified transmission security issues occur in Long Island and Western New York beginning in 2017.

In Long Island, the East Garden City to Valley Stream 138 kV line could not be secured within applicable thermal ratings when another 138 kV line is out-of-service (also known as an “N-1-1” condition). The power flow on this facility is driven by the combination of LIPA load in western Long Island and the scheduled 300 MW wheel between ConEdison and LIPA. This overload has now been identified as a result of no longer reducing the wheel following an outage, for which ConEdison’s contractual portion of Y50 is assumed to be delivered to ConEdison, thus reducing the portion of western Long Island load that

is capable of being served through the overloaded facility from generating sources in eastern Long Island.

The Oakdale 345/115 kV transformer also could not be secured within applicable thermal ratings under certain transmission line outage conditions. This overload was noted in the 2014 Reliability Needs Assessment as well. At that time, NYSEG provided an update to their Local Transmission Owner Plans that included a third Oakdale transformer and reconfiguration of the Oakdale 345 kV substation. NYSEG's planned in-service date was 2018, which met the inclusion rules and therefore addressed the Reliability Need identified in the 2014 Reliability Needs Assessment. However, as part of the 2016 Gold Book reporting process, NYSEG updated the in-service date to the winter of 2021, which does not meet the inclusion rules for this 2016 Reliability Needs Assessment Base Case. Without this project in the Base Case, the Oakdale transformer remains overloaded.

The two transmission security related Reliability Needs listed in **Table E-2** will be eligible for the NYISO to solicit solutions if those Reliability Needs remain unresolved by further updates to Local Transmission Owner Plans. Following such a solicitation by the NYISO, developers may submit market-based solutions and alternative regulated solutions for evaluation as part of the 2016 Comprehensive Reliability Plan.

As a backstop to market-based solutions, the NYISO employs a process to define responsibility should the market fail to provide an adequate solution to an identified Reliability Need. The Responsible Transmission Owners for the identified Reliability Needs, NYSEG and LIPA, will be tasked to develop detailed regulated backstop solutions for evaluation for inclusion in the 2016 Comprehensive Reliability Plan.

Given the limited time between the identification of the transmission security related Reliability Needs in this Reliability Needs Assessment report and their occurrence in 2017, the use of demand response and operating procedures, including load shedding under emergency conditions, may be necessary to maintain reliability during peak load periods until permanent solutions can be put in place. Accordingly, the Responsible Transmission Owners will present at the Electric System Planning Working Group (ESPWG) and at the Transmission Planning Advisory Subcommittee (TPAS) any updates to their LTPs that impact the Reliability Needs identified in the 2016 Reliability Needs Assessment, including their proposed operating procedures pending completion of their permanent solutions, for review and acceptance by the NYISO and consideration in the 2016 Comprehensive Reliability Plan.

In addition, the 2016 Reliability Needs Assessment provides analysis of risks to the Bulk Power Transmission Facilities under certain scenarios to assist stakeholders and

developers in developing and proposing market-based and regulated reliability solutions, as well as policy makers to formulate state policy.

Scenarios are variations on the Reliability Needs Assessment Base Case to assess the impact of possible changes in key study assumptions, such as higher load forecast (*i.e.*, not including the benefits of retail solar photovoltaic (“solar PV”, or “behind-the-meter solar PV”) and of the energy efficiency programs), capacity retirements or sales (*e.g.*, all nuclear units retire, remaining coal units deactivate, *etc.*), and additional transmission build-outs (*e.g.*, transmission driven by public policy) which, if they occurred, could change the timing, location, or degree of violations of applicable Reliability Criteria on the NYCA system during the Study Period.

As demonstrated in the 2016 Reliability Needs Assessment scenarios, a higher load level or additional retirement of capacity (nuclear, *etc.*) could cause resource adequacy Reliability Needs.

In addition to the above-referenced scenarios, the NYISO also analyzed the risks associated with the cumulative impact of environmental laws and regulations, which may affect the flexibility in plant operation and may make fossil plants energy-limited resources. The RNA discusses the environmental regulations that affect long-term power system planning and highlights the impacts of various environmental drivers on resource availability.

As part of its ongoing Reliability Planning Process, the NYISO monitors and tracks the progress of market-based projects and regulated backstop solutions, together with other resource additions and retirements, consistent with its obligation to protect confidential information under its Code of Conduct. The other tracked resources include: (i) units interconnecting to the bulk power transmission system; (ii) the development and installation of local transmission facilities; (iii) additions, mothballs or retirement of generators; (iv) the status of mothballed/retired facilities; (v) the continued implementation of New York State energy efficiency, solar PV installations, clean energy standards, and similar programs; (vi) participation in the NYISO demand response programs; and (vii) the impact of new and proposed environmental regulations on the existing generation fleet.

# Appendices